



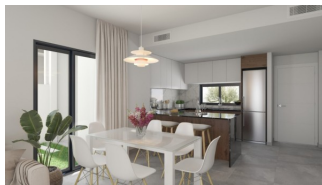
REF: # 9604

ORIHUELA COSTA (VISTABELLA GOLF)



INFO

PRICE:	224.000 €
PROPERTY TYPE:	Apartment
CITY:	Orihuela Costa (Vistabella Golf)
BEDROOMS:	2
Bathrooms:	2
Build (m2):	93
Plot (m2):	68
Terrace (m2):	26
Year:	-
Floor:	-
Old price	-



DESCRIPTION

NEW BUILD RESIDENTIAL APARTMENTS GROUND FLOOR IN VISTABELLA near the golf course. *** AIR-CONDITIONING, WHITE GOODS, ELECTRIC SHUTTERS, EVERYTHING APART FROM THE FURNITURE AND PICTURES INCLUDED!!!** This lovely spacious 93m2 ground floor apartment consists of 2 bedrooms with fitted wardrobes, 2 bathrooms, an open plan kitchen with lounge area, a private 26m2 terrace and 68m2 garden, all of which are being built with top quality products and materials. The communal areas are beautifully designed and have a lovely communal swimming pool and off road parking. At Vistabella Golf the course is designed so that each player can enjoy it from start to finish. Its undulating streets, strategic bunkers or lakes are some of the features that make it one of the most attractive designs in the area, where every stroke is a challenge and a pleasure for the senses. The 18 Holes of Vistabella Golf, par 72 and more than 6,000

meters in length have been designed following the guidelines of the modern fields with 4 tees of great amplitude in each hole, wide fairways and raised bunkers. The Vistabella Golf club house, restaurant, local bars and shops are within 5 minutes walk. The busy towns of San Miguel de Salinas and Los Montesinos are 5 minutes drive away and the lovely Blue flag beaches at Guardamar are just 15 minutes drive away. Only 15 minutes drive is “La Zenia Boulevard” the largest shopping centre in the Alicante region, it’s a one-stop destination for clothes, shoes and general supplies. No matter what you're after, chances are you won't walk out empty-handed. Alicante airport is 35 minutes away and Corvera Murcia airport is 45 minutes away.



STYLE

- Modern

AIRCONDITIONING

- Central airconditioning

DISTANCE TO :

Beach : +10 Km

Airport: 60 Km

PARKING

Parking no Cars: 1

FLOORING

- Tile floors
- Stone floors

KITCHEN

- Open kitchen
- Equipped kitchen

GARDEN AND TERRACES

- Open terrace
- Landscaped
- Private garden
- Communal Garden

EXTRA

- Built in wardrobes
- Reinforced door
- Double glazed windows





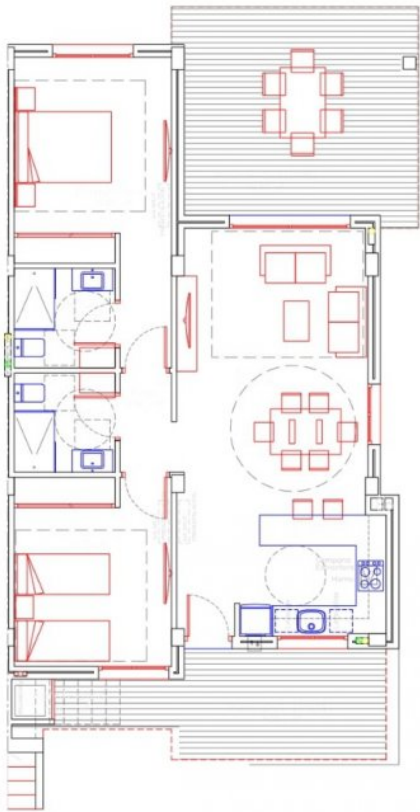


VIVIENDA N°1

PL.BAJA



PLANTA BAJA.



PLANTA BAJA.

SUP.UTIL VIVIENDA 1	
DEPENDENCIA	M2
PORCHE-1	9,20
AEROTERMIA	0,60
SALON COMEDOR COCINA	31,20
PORCHE-2(100%)	19,60
PASO	2,00
DORMITORIO-1	14,90
DORMITORIO-2	11,70
BAÑO-1	3,95
BAÑO-2	3,95
TOTAL UTIL VVDA,	97,10
* PORCHES COMPUTADOS AL 100%	
OTRAS SUP,ANEXAS A VVDA-1	
JARDINES-ACCESO	68,50

VIVIENDA N°4

PL.BAJA



SUP.UTIL VIVIENDA 4	
DEPENDENCIA	M2
PORCHE-1	9,20
AEROTERMIA	0,60
SALON COMEDOR COCINA	31,20
PORCHE-2(100%)	19,60
PASO	2,00
DORMITORIO-1	14,90
DORMITORIO-2	11,70
BAÑO-1	3,95
BAÑO-2	3,95
TOTAL UTIL VVDA,	97,10
* PORCHES COMPUTADOS AL 100%	
OTRAS SUP,ANEXAS A VVDA-1	
JARDINES-ACCESO	68,50





"OUR EXPERIENCE IS YOUR GUARANTEE"