



REF: # 9579

TORREVIEJA (TORREVIEJA CENTRO)

INFO

PRICE: 349.950 €

PROPERTY TYPE:

CITY: Torrevieja
(Torrevieja
centro)

BEDROOMS: 2

Bathrooms: 2

Build (m2): 73

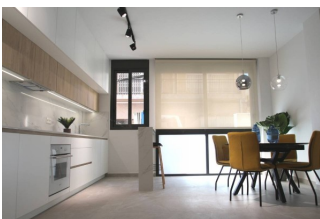
Plot (m2): -

Terrace (m2): 63

Year: -

Floor: -

Old price -



DESCRIPTION

NEW BUILD APARTMENTS PENTHOUSE IN TORREVIEJA 160 metres from Cura beach. This 73m2 penthouse apartment consists of 2 bedrooms with fitted wardrobes, 2 fully equipped bathrooms with underfloor heating, an open plan living with spacious layout, large glass windows and a kitchen equipped with top brand appliances. The apartment has both a large private 45m2 terrace and an 18m2 solarium, it is of modern design with high quality finishes and a beautiful communal swimming pool and green areas. Torreviejas Playa del Cura has pleasant promenade with a variety of bars and restaurants where you can savour authentic Spanish paellas. Torrevieja is a Spanish town in the province of Alicante, on the Costa Blanca. It is known for its superb promenade, restaurants, weekly Friday market and the Habaneras shopping centre. Only 15 minutes drive is "La Zenia Boulevard" the largest shopping centre in the Alicante region, it's a one-stop destination for clothes, shoes and general supplies. No matter what you're after, chances are you won't walk out empty-handed. With a typically Mediterranean climate, Torrevieja is a coastline you can enjoy lovely boardwalks and sandy blue flag beaches only 160 metres away! In the interior, the Lagunas de La Mata-Torrevieja Natural Park has trails and two salty lagoons, one pink and the other green. In addition to the original established Golf courses on the Orihuela Costa Villamartin, Las Ramblas, Real Campoamor and Las Colinas, Torrevieja area is also well served with excellent courses such as La Finca, La Marquesa, Las Colinas, Lo Romero and Vistabella offering different golf experiences with a variety of sea and mountain views. Alicante airport located 40 minutes away and Murcia airport about 1 hour away

ENERGETIC CERTIFIED



STYLE	VIEWS	DISTANCE TO :	KITCHEN
<ul style="list-style-type: none">• Modern	<ul style="list-style-type: none">• Panoramic views	Beach : 200 m Airport: 60 Km	<ul style="list-style-type: none">• Equipped kitchen
GARDEN AND TERRACES	HEATING	EXTRA	
<ul style="list-style-type: none">• Open terrace• Communal Garden	<ul style="list-style-type: none">• Floor heating	<ul style="list-style-type: none">• Reinforced door	





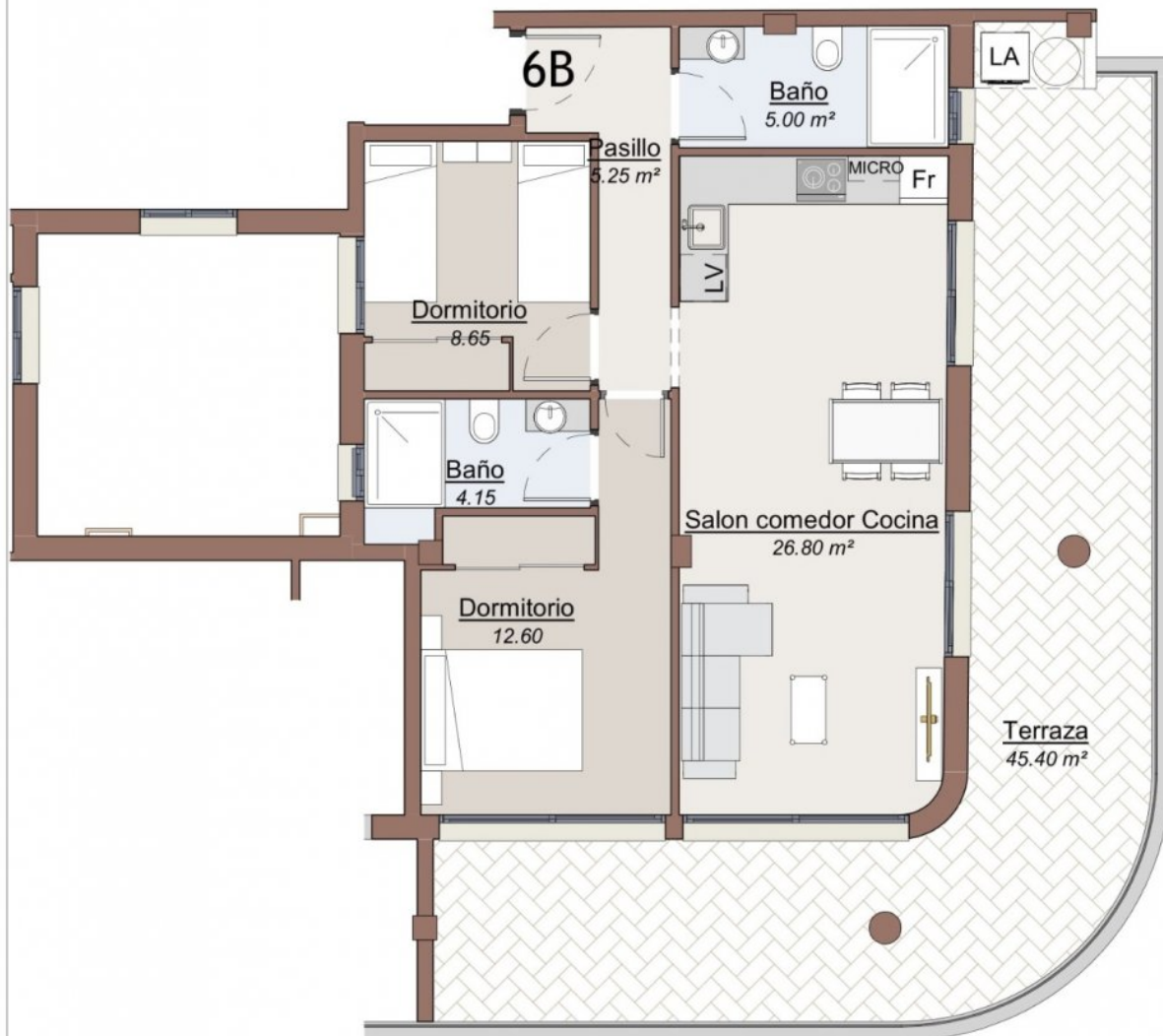






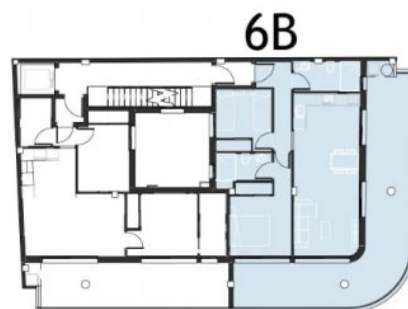


PLANTA 6 - ATICO

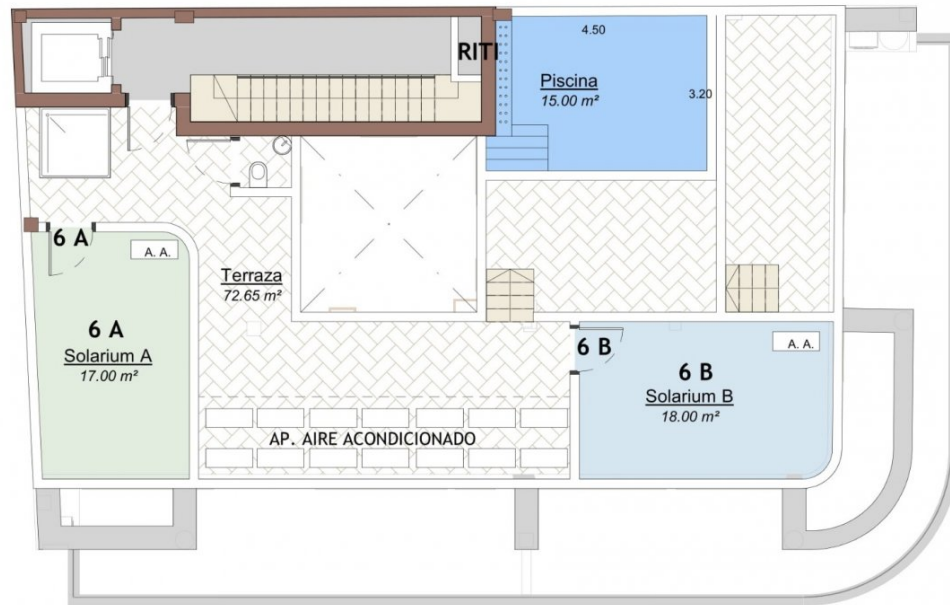


2 dormitorios
2 baños

SUP. TOTAL INCL. ZONAS COM.
158,77 M²



CUBIERTA - SOLARIUMS - PISCINA



"OUR EXPERIENCE IS YOUR GUARANTEE"