



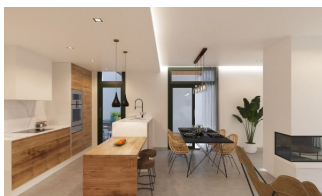
REF: # 9521

ORIHUELA COSTA



#### INFO

PRICE:	348.000 €
PROPERTY TYPE:	Villa (Semi detached)
CITY:	Orihuela Costa
BEDROOMS:	3
Bathrooms:	3
Build ( m2 ):	140
Plot ( m2 ):	217
Terrace ( m2 ):	40
Year:	-
Floor:	-
Old price	-



#### DESCRIPTION

FANTASTIC VILLA, SEMI DETACHED, IN DAYA NUEVA. This 140m2 semi-detached villa consists of living/dining room with fireplace, an open plan kitchen, 3 bedrooms, 3 bathrooms, a 40m2 terrace and both a private and communal pool. Daya Nueva is the perfect combination between a relaxing and comfortable rural lifestyle and the vibrant coastal areas of the Costa Blanca. Situated close to all services, this villa is located in a typical Spanish town of Vega Baja, south of Alicante, offering sun and tranquility throughout the year. With its easy access to the A37 that connects Alicante with Cartagena and its proximity to all the coastal towns, Daya Nueva has become a perfect place of residence both to enjoy your holidays and to live. For golf enthusiasts there are some great golf courses nearby at La Finca (Algorfa) and la Marquesa in (Ciudad Quesada). Distance to the beach 13 km, distance to the airport 40 km, distance to golf 8km

#### ENERGETIC CERTIFIED



STYLE	VIEWS	DISTANCE TO :	KITCHEN
<ul style="list-style-type: none"><li>Modern</li></ul>	<ul style="list-style-type: none"><li>Panoramic views</li></ul>	Beach : +10 Km Airport: 40 Km	<ul style="list-style-type: none"><li>Open kitchen</li></ul>
GARDEN AND TERRACES	EXTRA		
<ul style="list-style-type: none"><li>Open terrace</li><li>Private garden</li></ul>	<ul style="list-style-type: none"><li>Reinforced door</li></ul>		

## PROPERTY GALLERY











2



SUPERFICIES	
Planta Baja	81,15 m²
Porche (50%)	6,58 m²
Planta 1	52,79 m²
<b>TOTAL</b>	<b>140,52 m²</b>

PISCINA	
Lámina de agua: 4,70 x 4,15 m	
Profundidad mínima: 1,00 m	
Profundidad máxima: 1,60 m	

<b>NOVIEMBRE 2019</b>
-----------------------

Planes sujetos a posibles modificaciones debido a razones técnicas o legales. Las medidas son aproximadas. Plans subject to possible modifications for technical or legal reasons. Measures and surfaces are approximate. Plan soumis à modifications en fonction des raisons techniques ou légales. Les surfaces sont approximatives.





***"OUR EXPERIENCE IS YOUR GUARANTEE"***