



REF: # 7112

VILLAJOYOSA (MONTIBOLI)



#### INFO

**PRICE:** 395.000 €

**PROPERTY TYPE:** Apartment

**CITY:** Villajoyosa (Montiboli)

**BEDROOMS:** 2

**Bathrooms:** 2

**Build ( m2 ):** 125

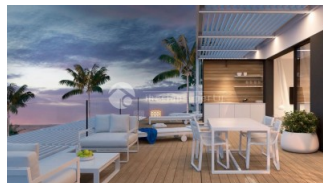
**Plot ( m2 ):** -

**Terrace ( m2 ):** 59

**Year:**

**Floor:** -

**Old price** -



#### DESCRIPTION

New terrace apartments, all with great views and very short distance to the Mediterranean. The apartments all have very large terraces and consist of 2 or 3 bedrooms. 2 bathrooms. Fully equipped kitchen with all appliances. Waterborne floor heating throughout the whole apartment. Bathroom complete bathroom decor and with heating. Large roof-to-floor windows that will give you a feeling of almost sitting along the water's edge. Open kitchen. Domitica air conditioning. Basement parking for one car. Comon swimming pool and communal nicely worked up garden. Some of the lower ground floor apartments have space / opportunity to build their own private swimming pool. The apartment is located in an attractive area called Monteboli. Among other things, it is known for one of Spain's most attractive hotels where many celebre guests have stayed. About 2.5 km into the center of Villajoyosa. There are both train and bus connection into the city center.

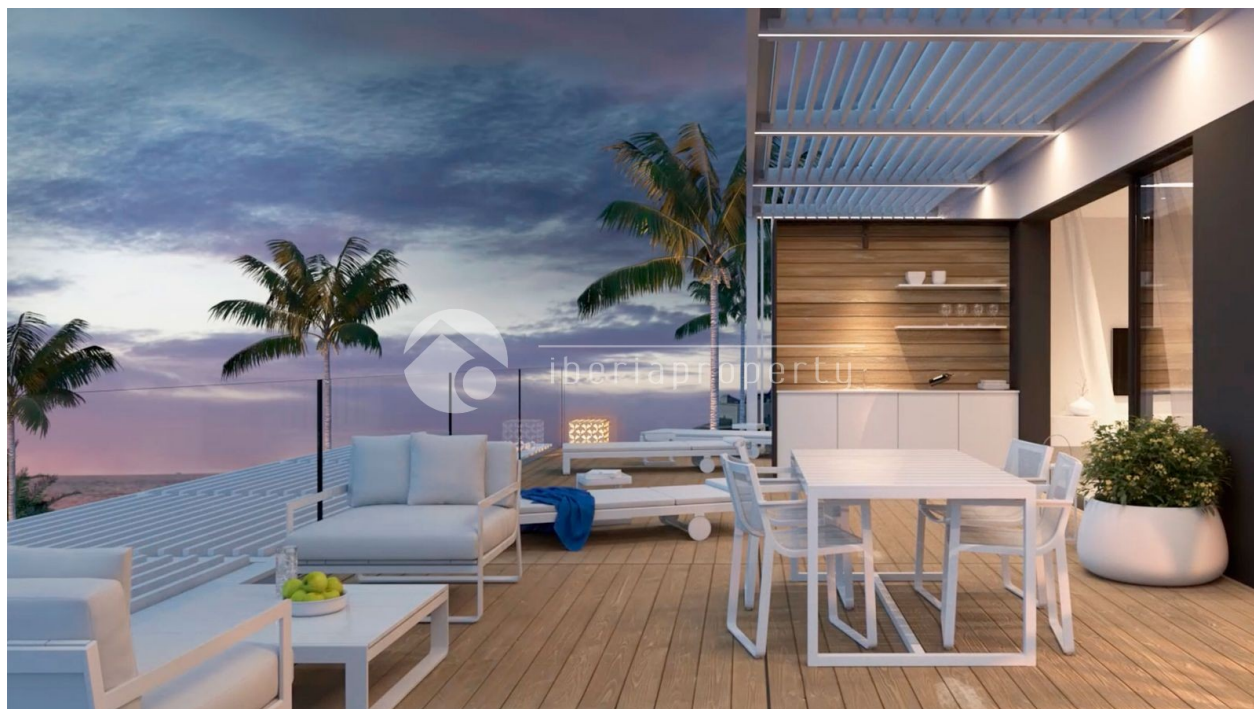
#### ENERGETIC CERTIFIED



<b>STYLE</b>	<b>VIEWS</b>	<b>AIRCONDITIONING</b>	<b>DISTANCE TO :</b>
<ul style="list-style-type: none"><li>• Modern</li></ul>	<ul style="list-style-type: none"><li>• Panoramic views</li><li>• Sea views</li><li>• Mountain views</li></ul>	<ul style="list-style-type: none"><li>• Central airconditioning</li></ul>	Beach : 200 m Airport: 50 Km Town center : 2 Km
<b>ORIENTATION</b>	<b>FURNITURE</b>	<b>PARKING</b>	<b>MAIN LIVING AREA</b>
South east	<ul style="list-style-type: none"><li>• Not furnished</li></ul>	Garage no Cars : 1 Parking no Cars: 1	<ul style="list-style-type: none"><li>• Bathroom en-suite</li></ul>
<b>FLOORING</b>	<b>KITCHEN</b>	<b>GARDEN AND TERRACES</b>	<b>HEATING</b>
<ul style="list-style-type: none"><li>• Tile floors</li></ul>	<ul style="list-style-type: none"><li>• Open kitchen</li><li>• Equipped kitchen</li></ul>	<ul style="list-style-type: none"><li>• Covered terrace</li><li>• Open terrace</li><li>• Exterior lights</li><li>• Automatic watering system</li><li>• Palm trees</li><li>• Fenced</li><li>• Stone walls</li><li>• Electric gate</li><li>• Private garden</li><li>• Communal Garden</li></ul>	<ul style="list-style-type: none"><li>• Floor heating</li><li>• Floor heating bathrooms</li></ul>
<b>EXTRA</b>			
<ul style="list-style-type: none"><li>• Built in wardrobes</li><li>• Reinforced door</li><li>• Double glazed windows</li><li>• Satellite TV</li><li>• Storage room</li><li>• Internet</li></ul>			





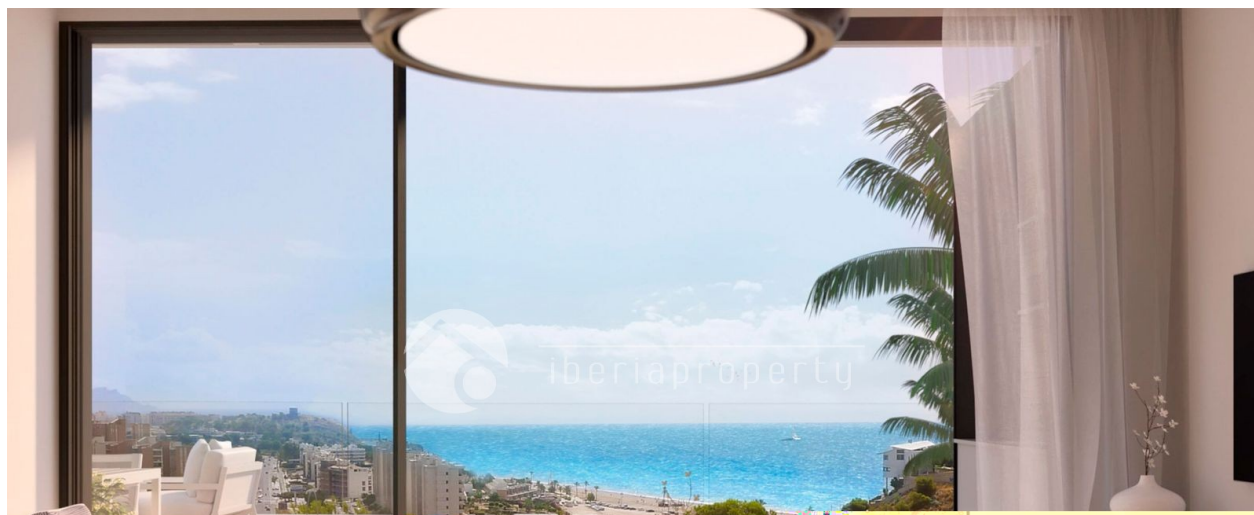






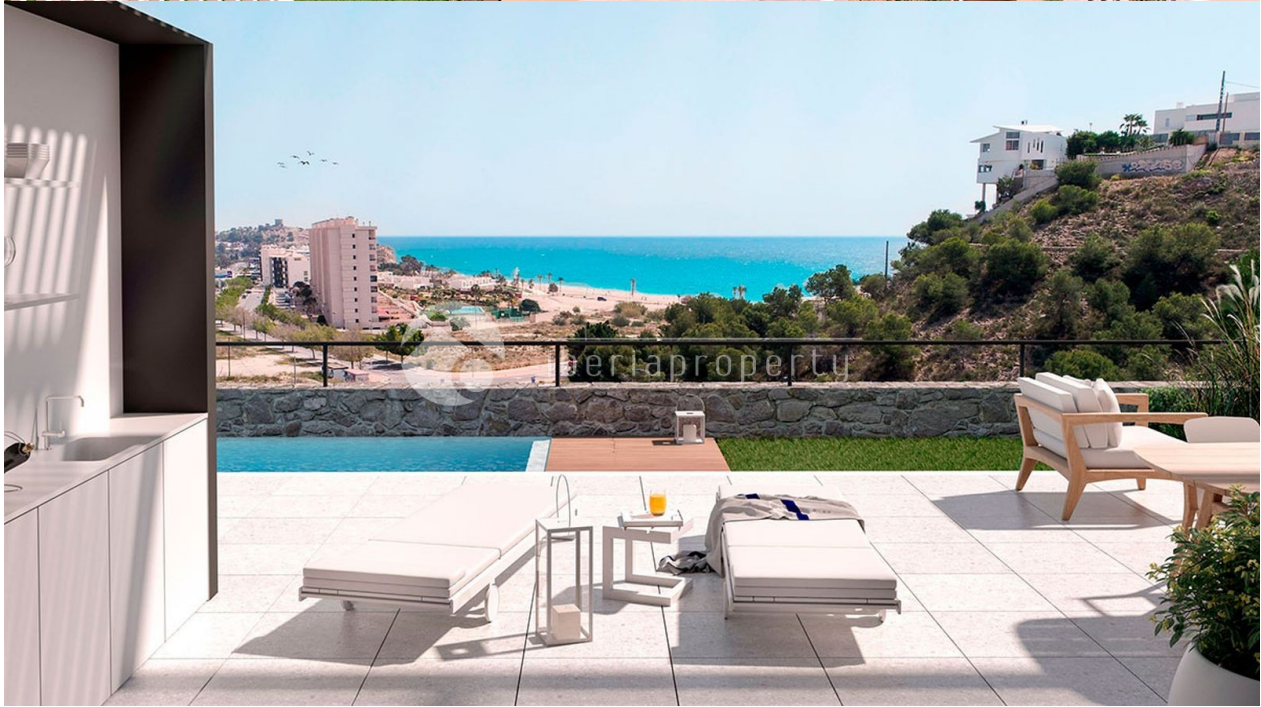




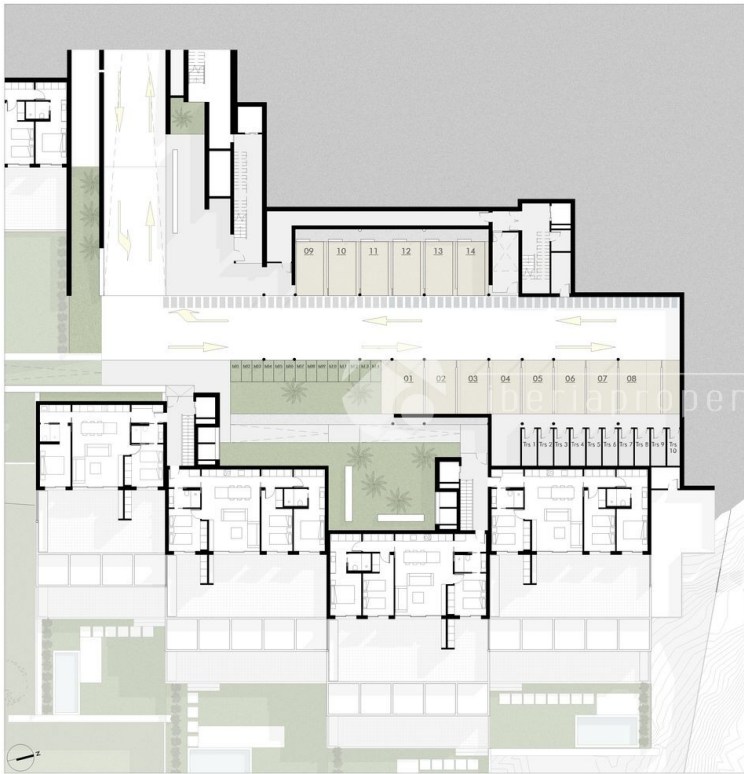












GARAJE

## Bloque 1

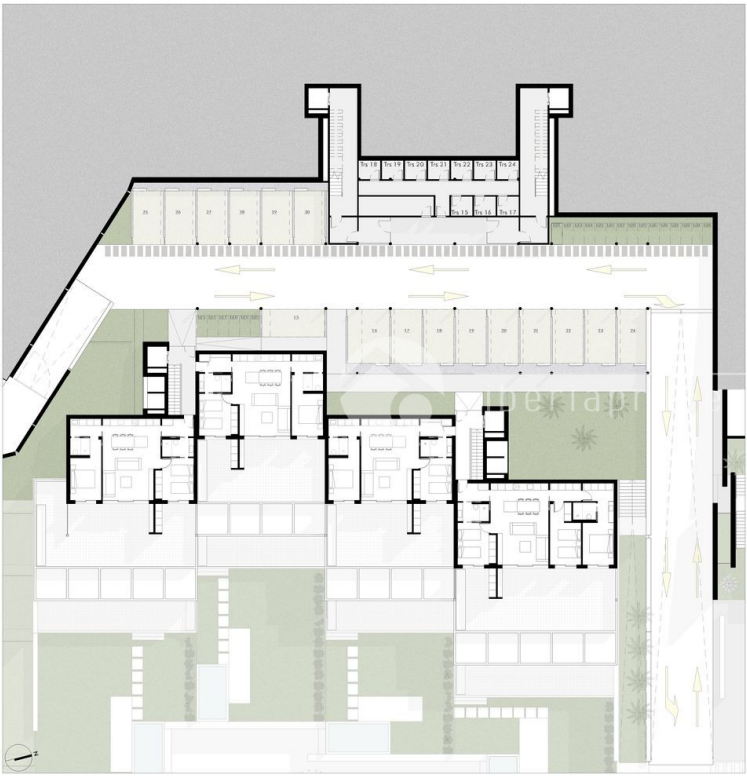
Vivienda	Nº plaza	Nº plaza bicicleta	Nº trastero
1	01	b01	Trs 1
2	02	b02	Trs 2
3	03	b03	Trs 3
4	04	b04	Trs 4
5	05	b05	Trs 5
6	06	b06	Trs 6
7	07	b07	Trs 7
8	08	b08	Trs 8
9	09	b09	Trs 9
10	10	b10	Trs 11
11	11	b11	Trs 12
12	12	b12	Trs 10
13	13	b13	Trs 13
14	14	b14	Trs 14

\* La presente información gráfica es orientativa. La sociedad vendedora se reserva el derecho a efectuar las modificaciones que fueren motivadas por exigencias técnicas, legales o comerciales.

E 1:250







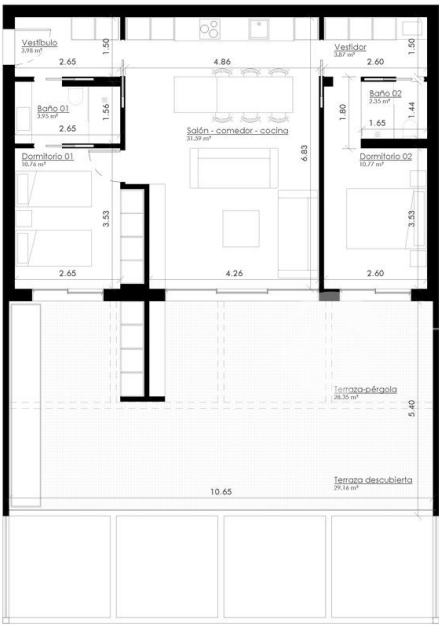
GARAJE

## Bloque 2

Vivienda	Nº plaza	Nº plaza bicicleta	Nº trastero
15	15	B-15	Trs 15
16	16	B-16	Trs 16
17	17	B-17	Trs 17
18	18	B-18	Trs 18
19	19	B-19	Trs 19
20	20	B-20	Trs 20
21	21	B-21	Trs 21
22	22	B-22	Trs 22
23	27	B-23	Trs 25
24	28	B-24	Trs 26
25	23	B-25	Trs 23
26	29	B-26	Trs 27
27	30	B-27	Trs 28
28	24	B-28	Trs 24

\* La presente información gráfica es orientativa. La sociedad vendedora se reserva el derecho a efectuar las modificaciones que fuesen motivadas por exigencias técnicas, legales o comerciales.

E 1:250



TIPOLOGIA 02

## Vivienda 20



Vivienda B2 - A2.4

### SUPERFICIE CONSTRUIDA

Vivienda	80,25 m <sup>2</sup>
Terraza	59,13 m <sup>2</sup>
Elementos comunes	45,71 m <sup>2</sup>

### TOTAL CONSTRUIDA

185,09 m<sup>2</sup>

### SUPERFICIES ÚTILES

Vestibulo	3,98 m <sup>2</sup>
Salón - comedor - cocina	31,59 m <sup>2</sup>
Baño 01	3,95 m <sup>2</sup>
Dormitorio 01	10,76 m <sup>2</sup>
Vestidor	3,87 m <sup>2</sup>
Baño 02	2,35 m <sup>2</sup>
Dormitorio 02	10,77 m <sup>2</sup>

### TOTAL ÚTIL INTERIOR

67,27 m<sup>2</sup>

\* La presente información gráfica es orientativa. La sociedad vendedora se reserva el derecho a efectuar las modificaciones que fuesen motivadas por exigencias técnicas, legales o comerciales.



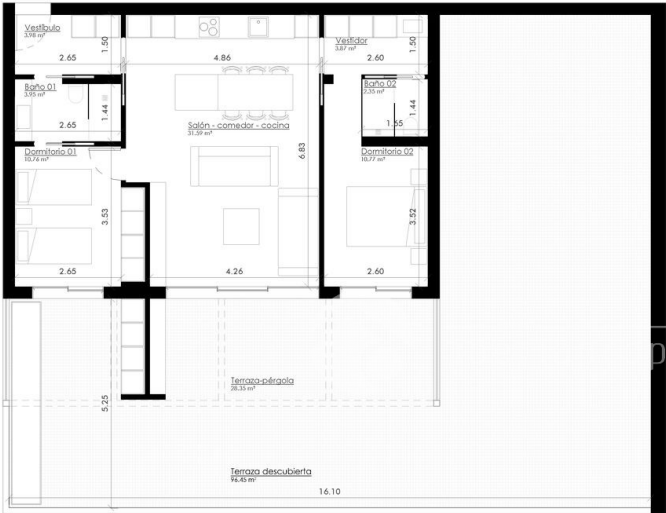
TIPOLOGÍA 02

Vivienda 25



Vivienda B2 - D3.1

SUPERFICIE CONSTRUIDA	
Vivienda	80,25 m²
Terraza	127,42 m²
Elementos comunes	45,71 m²
TOTAL CONSTRUIDA	
253,38 m²	
SUPERFICIES ÚTILES	
Vestíbulo	3,98 m²
Salón - comedor - cocina	31,59 m²
Baño 01	3,95 m²
Dormitorio 01	10,76 m²
Vestidor	3,87 m²
Baño 02	2,35 m²
Dormitorio 02	10,77 m²
TOTAL ÚTIL INTERIOR	
67,27 m²	
* La presente información gráfica es tentativa. La sociedad vendadora se reserva el derecho a efectuar las modificaciones que fuesen motivadas por exigencias técnicas, legales o comerciales.	



"OUR EXPERIENCE IS YOUR GUARANTEE"