



REF: # 7102

LA NUCIA/POLOP (POLOP)



INFO

PRICE:	298.500 €
PROPERTY TYPE:	Villa
CITY:	La Nucia/Polop (Polop)
BEDROOMS:	3
Bathrooms:	2
Build (m2):	98
Plot (m2):	203
Terrace (m2):	-
Year:	
Floor:	-
Old price	234.000 €



DESCRIPTION

New modern villa at great prices for those who now do the reservation early in the construction period All the villas are detached on private plots and all the villas have a fantastic view. The villas are built in a high technical standard. Double exterior walls with insulation. Sliding double windows with air ducts. This model Marina are all in one levels a can offer three bedrooms and two bath rooms. Living rooms with and open kitchen Built-in wardrobe on the bedrooms. Fully fitted kitchen silica worktop. Including induction top, oven extractor fan and stainless steel sink. Fully furnished bathroom with bathroom furniture. Connection points of TV, Data in every room. Including central air conditioning system, (heat pump) Solar water heater (hot water tank) Finished garden with anti-slip tiles and artificial grass. There are several options on the differ models. Private swimming pool from 13.900 euro. Roof terraces/solarium from 16.900 euro Parking for either one or 2 cars slightly depending on plot size A large common area will also be built with a shared garden and a large communal swimming pool. Own playground for children. Camera monitored outdoor area. Common charging point for electric bicycles. The entire area will be in a closed area my entrance through an electric

gate controlled by remote control



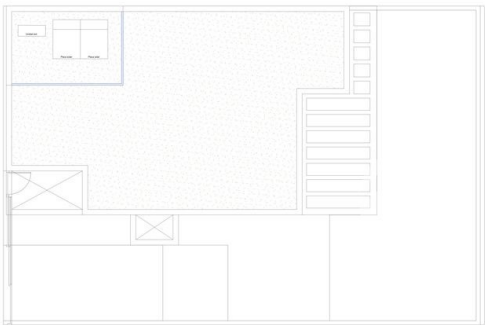
STYLE <ul style="list-style-type: none">• Modern	DISTANCE TO : <div>Beach : 7 Km</div> <div>Airport: 50 Km</div> <div>Town center : 2 Km</div>	ORIENTATION <div>South</div>	FURNITURE <ul style="list-style-type: none">• Not furnished
PARKING <div>Garage no Cars : 1</div> <div>Parking no Cars: 1</div>	MAIN LIVING AREA <ul style="list-style-type: none">• Bathroom en-suite	FLOORING <ul style="list-style-type: none">• Tile floors	KITCHEN <ul style="list-style-type: none">• Open kitchen• Equipped kitchen
GARDEN AND TERRACES <ul style="list-style-type: none">• Covered terrace• Open terrace• Exterior lights• Automatic watering system• Fruit trees• Palm trees• Play Ground• Landscaped• Fenced• Lawn• Stone walls• Electric gate• Private garden• Communal Garden	EXTRA <ul style="list-style-type: none">• Built in wardrobes• Reinforced door• Double glazed windows• Satellite TV• Internet		







MARINA



TIPO 3D		30 + 28
SUPERFICIES CONSTRUIDAS (m2)		
SUP. CONSTRUIDA ÚTIL	80.02 m2	
SUP. CONSTRUIDA REJOLADA	0.37 m2	
SUP. CONSTRUIDA LAVADERO	2.80 m2	
TOTAL SUP. CONSTRUIDA PENALIZADA	16.89 m2	
SUPERFICIES ÚTILES EXTERIORES (m2)		
PL. PAVIMENTO APARCAMIENTO	15.40 m2	
TERRAZA ACCESO	15.70 m2	
TERRAZA DESCUBIERTA	14.80 m2	
TERRAZA PÉNDULA	15.02 m2	
SUPERFICIE AMBITORIAL	14.80 m2	
TOTAL ÚTIL EXTERIOR	111.72 m2	



PROYECTO BÁSICO DE UN INMUEBLE RESIDENCIAL
JARDINES Y CENTRO SOCIAL

PROYECTISTA: CHAMIZA ARQUITECTOS S.L.
PROYECTISTA: CHAMIZA ARQUITECTOS S.L.
PROYECTISTA: CHAMIZA ARQUITECTOS S.L.

PROYECTO: ALBARRACÍN N.º 11

PROYECTISTA: CHAMIZA ARQUITECTOS S.L.

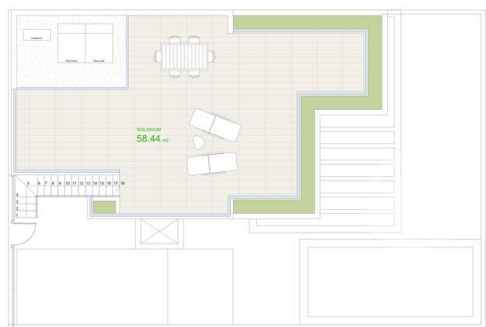
PROYECTISTA: CHAMIZA ARQUITECTOS S.L.

PROYECTO: ALBARRACÍN N.º 11

PROYECTISTA: CHAMIZA ARQUITECTOS S.L.

PROYECTISTA: CHAMIZA ARQUITECTOS S.L.

MARINA ampliada



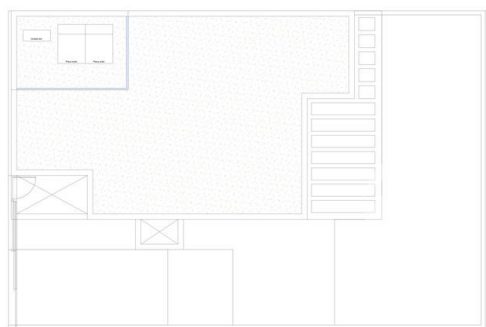
TIPO 3D-A con piscina 30 + 28

SUPERFICIES CONSTRUIDAS (m²)	
SUP. CONSTRUIDA VIVIENDA	47.28 m²
SUP. CONSTRUIDA PISCINA	2.08 m²
SUP. CONSTRUIDA LAVABO	0.20 m²
SUP. CONSTRUIDA BIODIVERSA	0.88 m²
SUP. CONSTRUIDA PISCINA	0.88 m²
TOTAL SUP. CONSTRUIDA PISCINA	3.84 m²

SUPERFICIES ÚTILES EXTERIORES (m²)	
PL. PAVIMENTO APARCAMIENTO	15.40 m²
TERRAZA ACCESO	0.20 m²
TERRAZA DESCUBERTA	0.20 m²
TERRAZA PISCINA	0.20 m²
LAVABO DE AGUA	0.20 m²
SUPERFICIE LAVABO	0.20 m²
SOLARIM	0.20 m²
TOTAL ÚTIL EXTERIOR	16.60 m²



MARINA



TIPO 3D 30 + 28

SUPERFICIES CONSTRUIDAS (m²)	
SUP. CONSTRUIDA VIVIENDA	47.28 m²
SUP. CONSTRUIDA PISCINA	2.08 m²
SUP. CONSTRUIDA LAVABO	0.20 m²
TOTAL SUP. CONSTRUIDA PISCINA	3.84 m²

SUPERFICIES ÚTILES EXTERIORES (m²)	
PL. PAVIMENTO APARCAMIENTO	15.40 m²
TERRAZA ACCESO	0.20 m²
TERRAZA DESCUBERTA	0.20 m²
TERRAZA PISCINA	0.20 m²
LAVABO DE AGUA	0.20 m²
SUPERFICIE LAVABO	0.20 m²
SOLARIM	0.20 m²
TOTAL ÚTIL EXTERIOR	16.60 m²



"OUR EXPERIENCE IS YOUR GUARANTEE"