



REF: # 5945

TORREVIEJA (TORREVIEJA)



#### INFO

**PRICE:** 595.000 €

**PROPERTY TYPE:** Villa

**CITY:** Torrevieja (Torrevieja)

**BEDROOMS:** 3

**Bathrooms:** 3

**Build ( m2 ):** 233

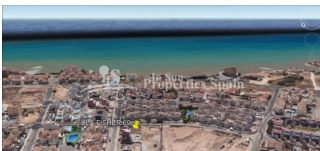
**Plot ( m2 ):** 425

**Terrace ( m2 ):** 69

**Year:** 2018

**Floor:** -

**Old price** -



#### DESCRIPTION

Living is easy in this impressive 233m2 detached Villa located in Torre del Morro, TORREVIEJA. With delivery in October 2018 this Villa is distributed over three floors with 69m2 roof solarium offering sea views. The floor plan encompasses 3 bedrooms with plenty of room for study, sleep and storage, 3 bathrooms with under floor heating and a sleek kitchen that flows through to the dining area. There is also a semi-basement which offers endless possibilities (gym, home cinema, additional bedrooms/bathrooms etc). The generously proportioned accommodation effortlessly flows from the open plan living space to the terrace and zen patio beyond. The 425m2 plot also boasts 34m2 private infinity swimming pool, jacuzzi and private parking. 300m (less than a 5 minute walk) to the beach (Cala del Moro/Cala del Mojon) and situated on the Torrevieja - La Mata coast road, this stunning Villa is just 550m from the panoramic viewpoint La Torre del Moro which represents the early watchtowers which gave the town its name. This is a place which recreates the historic roots of Torrevieja and from which beautiful

photographs of the sea and sea coves can be obtained. 550m to the nearest supermarket and 300m to the nearest public school. Torrevieja is a seaside city approximately 50km south of Alicante City. Over recent years the local economy has hugely expanded due to the tourist industry and Torrevieja is a bustling hub with all the services needed for a holiday or as a permanent residence. 40 minutes from Alicante International Airport. Don't let this dream pass you by!



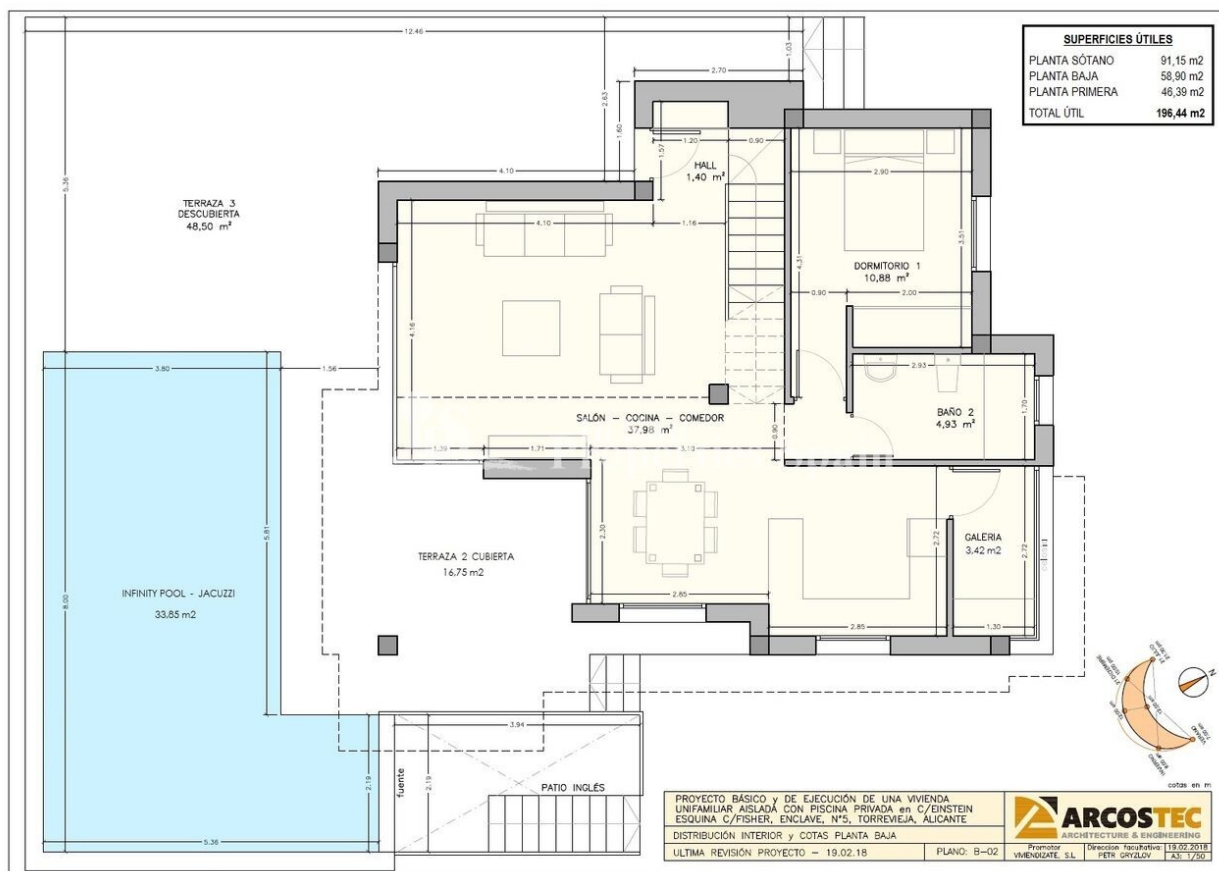
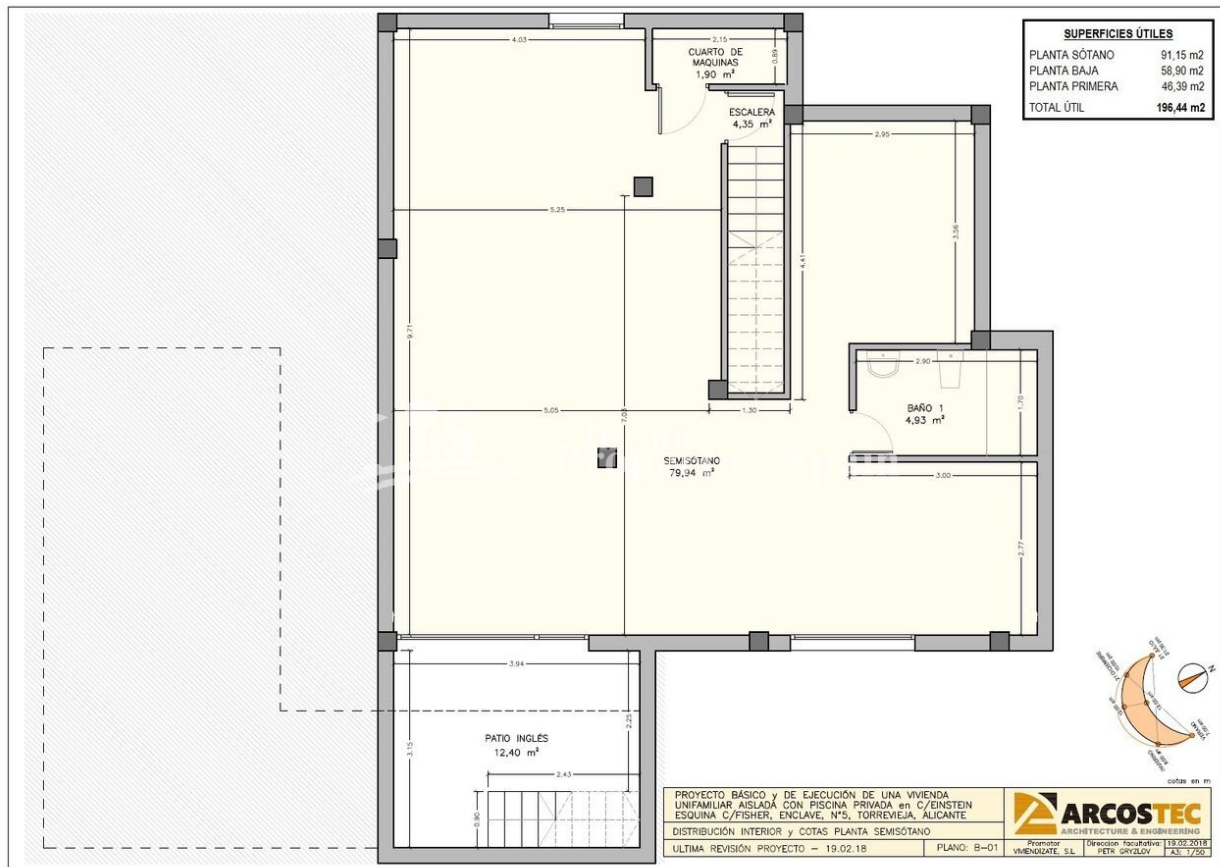
STYLE	VIEWS	DISTANCE TO :	ORIENTATION
<ul style="list-style-type: none"><li>• Modern</li><li>• Contemporary</li></ul>	<ul style="list-style-type: none"><li>• Sea views</li></ul>	Beach : 500 m Airport: 50 Km Town center : 1 Km	South west
FURNITURE	PARKING	MAIN LIVING AREA	FLOORING
<ul style="list-style-type: none"><li>• Not furnished</li></ul>	Garage no Cars : 1 Parking no Cars: 1	<ul style="list-style-type: none"><li>• Storage</li><li>• Bathroom en-suite</li></ul>	<ul style="list-style-type: none"><li>• Tile floors</li><li>• Stone floors</li></ul>
KITCHEN	GARDEN AND TERRACES	HEATING	EXTRA
<ul style="list-style-type: none"><li>• Open kitchen</li><li>• Equipped kitchen</li><li>• Granite countertop</li></ul>	<ul style="list-style-type: none"><li>• Covered terrace</li><li>• Open terrace</li><li>• Landscaped</li><li>• Fenced</li><li>• Electric gate</li><li>• Private garden</li></ul>	<ul style="list-style-type: none"><li>• Floor heating bathrooms</li></ul>	<ul style="list-style-type: none"><li>• Outdoor jacuzzi</li><li>• Built in wardrobes</li><li>• Reinforced door</li><li>• Double glazed windows</li><li>• Laundry room</li></ul>

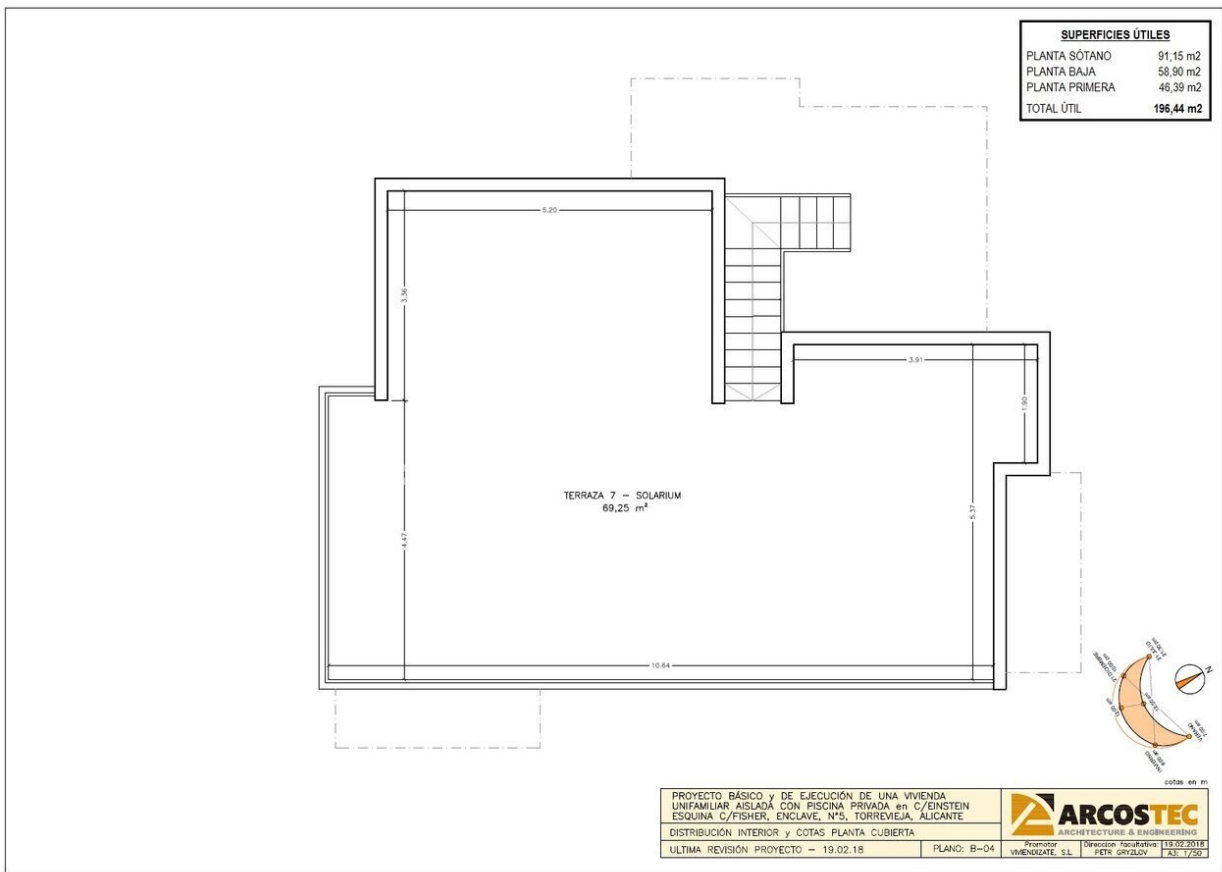
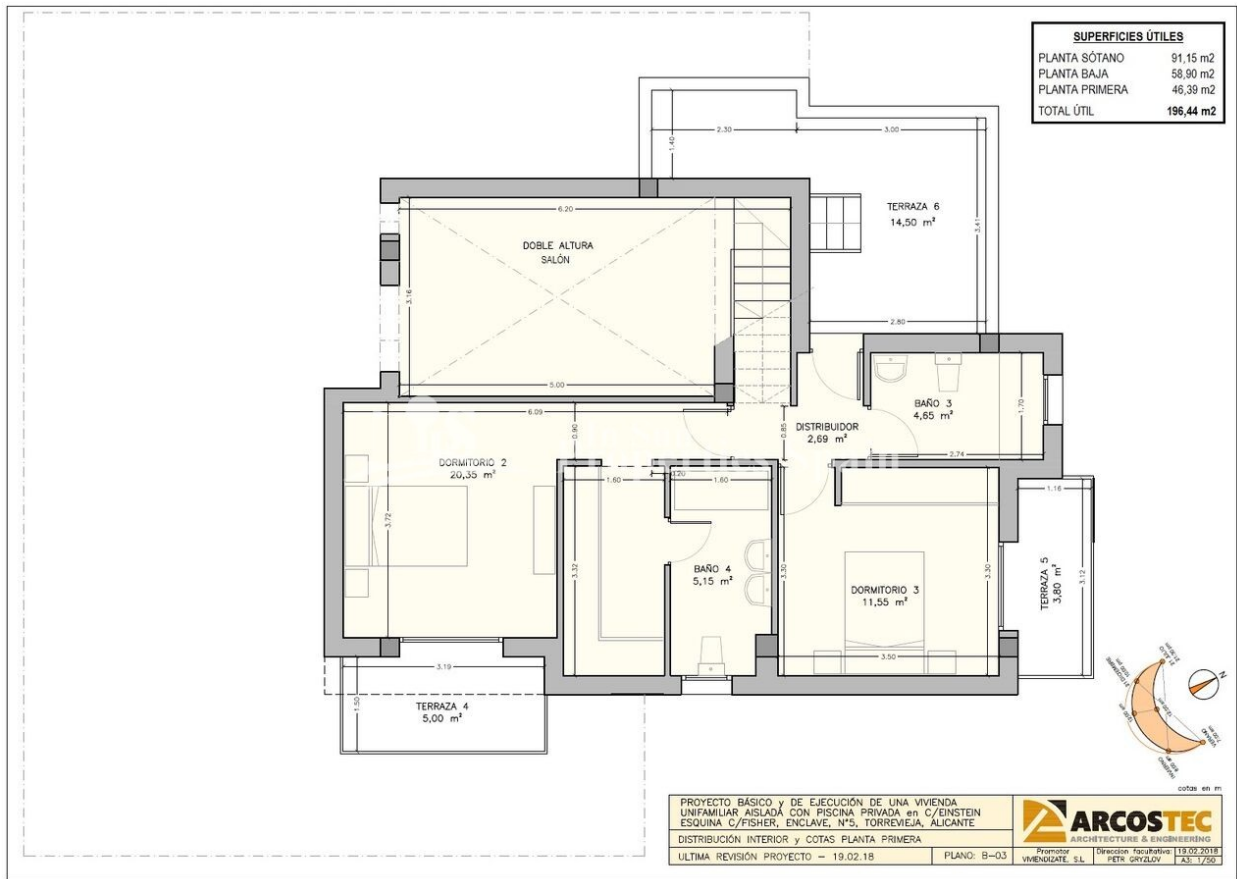














**SITUACIÓN  
TORREVIEJA**



## SUPERFICIES

<b>VILLA FISHER - 69</b>		Superficie Construida	
Planta Principal y Planta Alta	134,70m <sup>2</sup>	Main Level & Top Floor	
Semi-Sótano	98,72m <sup>2</sup>	Basement	
<b>Total construidos vivienda</b>	<b>233,42m<sup>2</sup></b>	<b>Total Housing</b>	
Terrazas Descubiertas	141,05m <sup>2</sup>	Terrace	
Terraza cubierta	16,75m <sup>2</sup>	Covered-Terrace	
Patio Inglés	12,40m <sup>2</sup>	Courtyard	
<b>Total Terrazas</b>	<b>170,20m<sup>2</sup></b>	<b>Total Terraces</b>	
<b>TOTAL</b>	<b>403,62m<sup>2</sup></b>	<b>TOTAL</b>	
<b>TOTAL PARCELA</b>	<b>424,70m<sup>2</sup></b>	<b>TOTAL PLOT</b>	

<b>PLANTA PRINCIPAL</b>	Supeq. Útil	<b>MAIN LEVEL</b>
Salon-Comedor-Cocina	37,98 m <sup>2</sup>	Living-Dining-kitchen
Dormitorio n°1	10,88 m <sup>2</sup>	Bedroom No.1
WC n°2	4,93 m <sup>2</sup>	Wc No.2
Hall	1,40 m <sup>2</sup>	Hall
lavadero	3,42 m <sup>2</sup>	Laundry room
Escalera	4,00 m <sup>2</sup>	Stairs
Porche-Entrada	13,56 m <sup>2</sup>	Porch-Entrance
Terraza Cubierta	16,75 m <sup>2</sup>	Covered-Terrace
Terraza Chill-Out	30,34 m <sup>2</sup>	Chill-Out Terrace
<b>PLANTA ALTA</b>	Supeq. Útil	<b>TOP FLOOR</b>
Dormitorio n°2 -Suite	20,35 m <sup>2</sup>	Bedroom No.2 -Suite
Wc-Suite n°4	5,15 m <sup>2</sup>	Wc No.4 Suite
Terraza-Suite n°4	5,00 m <sup>2</sup>	Terrace No.4 Suite
Dormitorio n°3	11,55 m <sup>2</sup>	Bedroom No.3
Terraza n°5	3,80 m <sup>2</sup>	Terrace No.5
Wc n°3	4,65 m <sup>2</sup>	Wc No.3
Pasillo	2,69 m <sup>2</sup>	Hallway
Terraza n°6	14,50 m <sup>2</sup>	Terrace No.6
<b>PLANTA SOLARIUM</b>	Supeq. Útil	<b>FLOOR SOLARIUM</b>
Solárium	69,25 m <sup>2</sup>	Solarium
<b>PLANTA SEMI-SÓTANO</b>	Supeq. Útil	<b>BASEMENT FLOOR</b>
Semi-Sótano	91,15 m <sup>2</sup>	Basement
Patio Inglés	12,40 m <sup>2</sup>	Courtyard

**"OUR EXPERIENCE IS YOUR GUARANTEE"**