



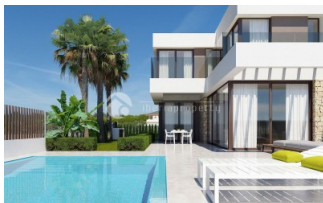
REF: # 5877

FINESTRAT (SIERRA CORTINA)



INFO

PRICE:	535.000 €
PROPERTY TYPE:	Villa
CITY:	Finestrat (Sierra Cortina)
BEDROOMS:	3
Bathrooms:	3
Build (m2):	207
Plot (m2):	473
Terrace (m2):	47
Year:	2019
Floor:	2
Old price	-



DESCRIPTION

Villas with 3 bedrooms and 3 bathrooms, with private pool, parking for vehicles and large garden- Include aircondition, finish garden, kitchen appliances, alarm, smarthome system, wardrobe, Distance to the sea around 2km, Construction year: 2018, Orientation: South, Views: Sea, Mountain, ,Environment: Beach, Golf, .

ENERGETIC CERTIFIED



STYLE	VIEWS	AIRCONDITIONING	DISTANCE TO :
<ul style="list-style-type: none">• Modern	<ul style="list-style-type: none">• Panoramic views• Sea views• Mountain views	<ul style="list-style-type: none">• Central airconditioning	Beach : 2 Km
			Airport: 50 Km
			Town center : 500 m
ORIENTATION	FURNITURE	PARKING	MAIN LIVING AREA
South	<ul style="list-style-type: none">• Not furnished	Garage no Cars : 1	<ul style="list-style-type: none">• Bathroom en-suite
		Parking no Cars: 2	
FLOORING	KITCHEN	GARDEN AND TERRACES	EXTRA
<ul style="list-style-type: none">• Tile floors	<ul style="list-style-type: none">• Open kitchen• Equipped kitchen	<ul style="list-style-type: none">• Covered terrace• Open terrace• Exterior lights• Automatic watering system• Fruit trees• Palm trees• Fenced• Stone walls• Electric gate• Private garden	<ul style="list-style-type: none">• Built in wardrobes• Alarm• Reinforced door• Double glazed windows• Satellite TV• Security guard• Video security• Storage room• Laundry room• Internet









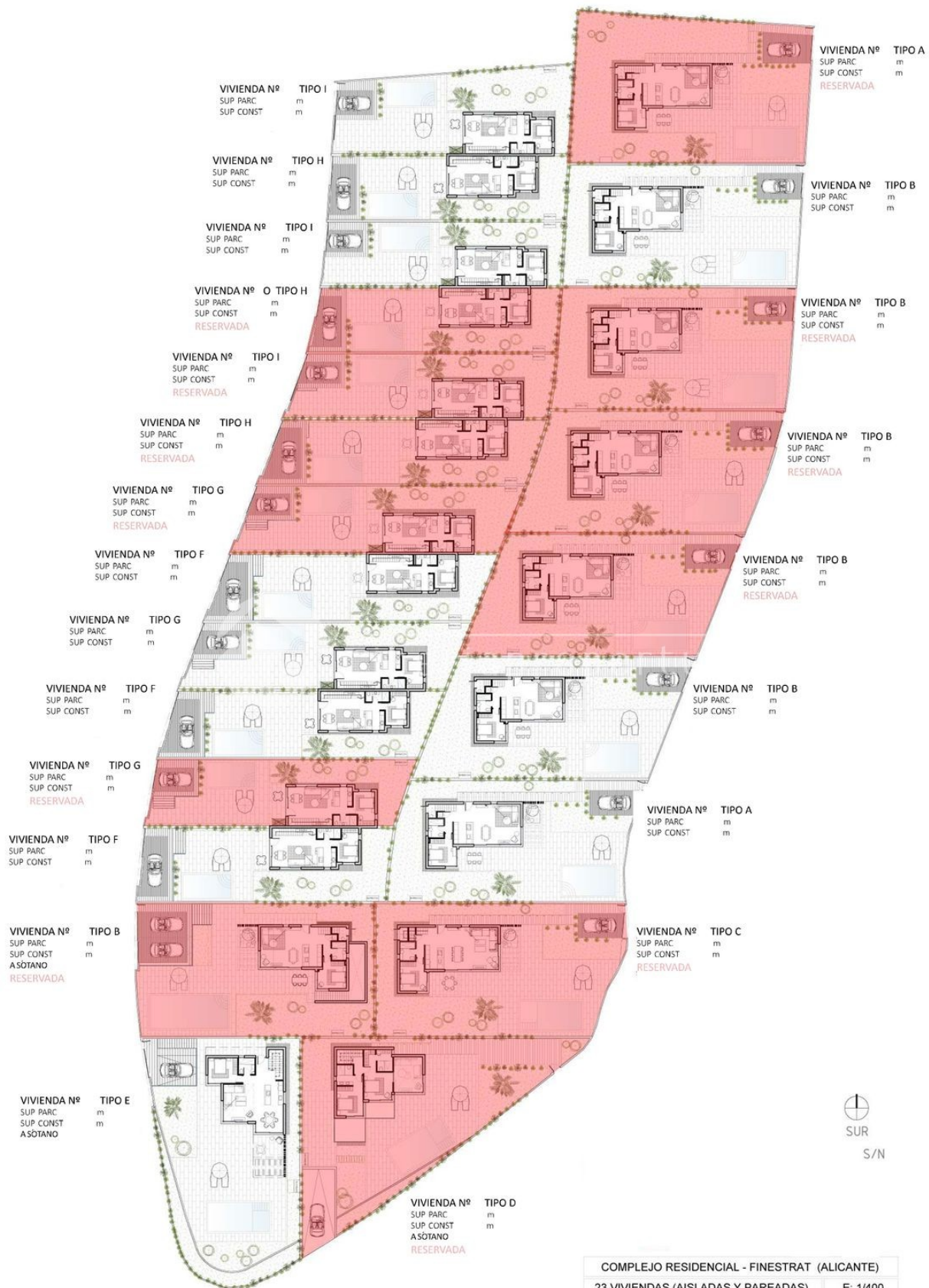


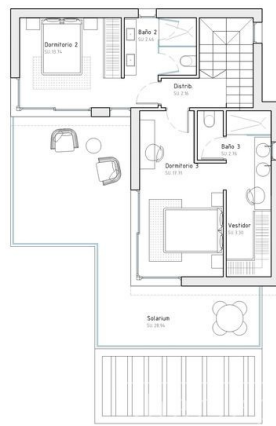
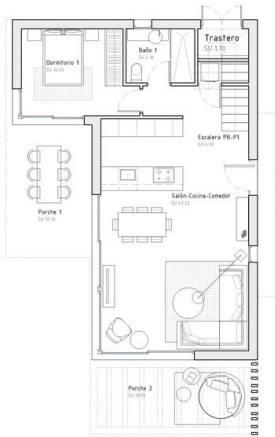
Image not found

https://www.cmsinmo.com/imagenes/uploads/inmu/4/5877/10_Baño.jpg



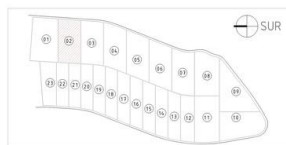




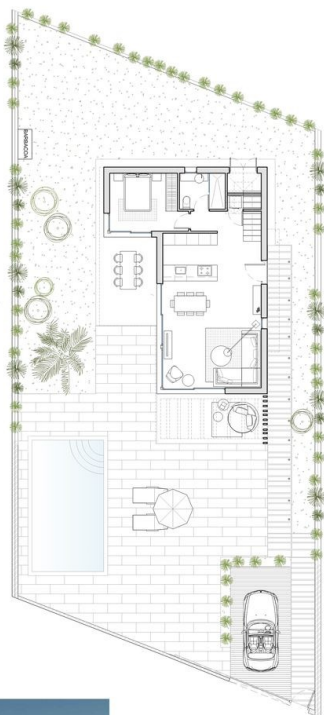
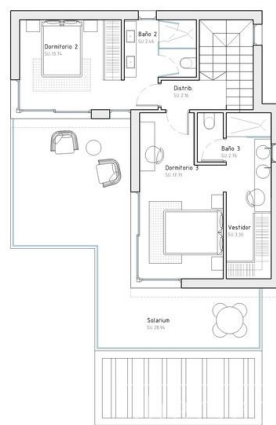
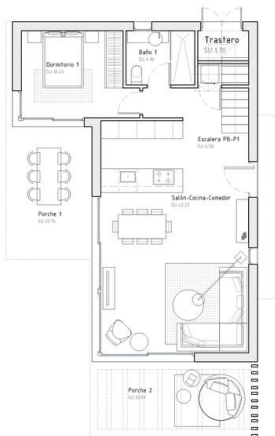


PARCELA 02

Superficie de parcela	429.66 m ²
Superficie construida vivienda	132.36 m ²
Superficie construida PB	72.32 m ²
Superficie construida P1	53.67 m ²
Superficie terraza cubierta PB	12.74 m ²
Superficie terraza descubierta solarium P1	28.94 m ²
Superficie terraza descubierta pèrgola PB	13.99 m ²
Piscina	32.00 m ²
Total superficies construidas proyecto	213.66m ²

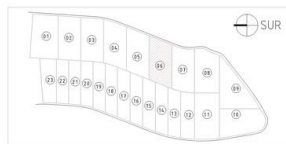


SUR
S/N

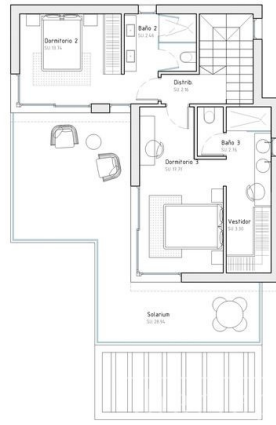
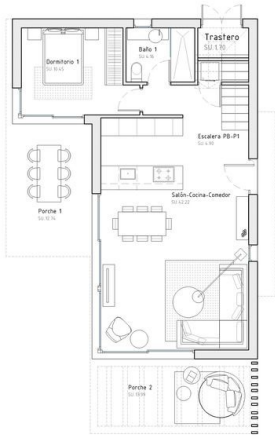


PARCELA 06

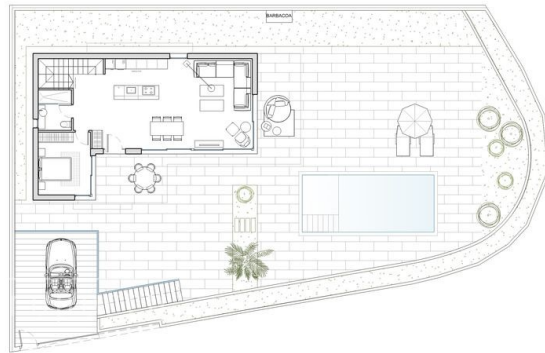
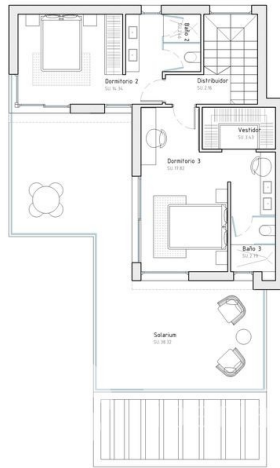
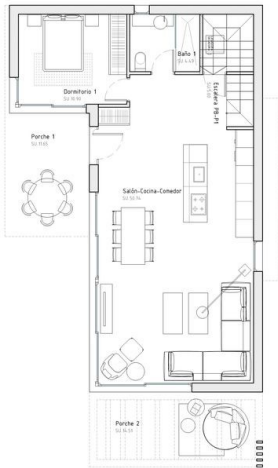
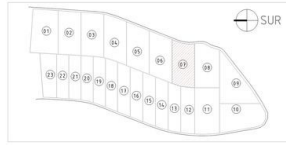
Superficie de parcela	433.71 m ²
Superficie construida vivienda	132.36 m ²
Superficie construida PB	72.32 m ²
Superficie construida P1	53.67 m ²
Superficie terraza cubierta PB	12.74 m ²
Superficie terraza descubierta solarium P1	28.94 m ²
Superficie terraza descubierta pèrgola PB	13.99 m ²
Piscina	32.00 m ²
Total superficies construidas proyecto	213.66m ²



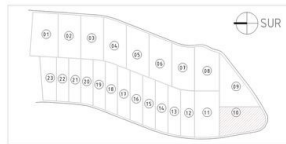
SUR
S/N



PARCELA 07	
Superficie de parcela	431.33 m ²
Superficie construida vivienda	132.36 m ²
Superficie construida PB	72.32 m ²
Superficie construida P1	53.67 m ²
Superficie terraza cubierta PB	12.74 m ²
Superficie terraza descubierta solarium P1	28.94 m ²
Superficie terraza descubierta pérgola PB	13.99 m ²
Piscina	32.00 m ²
Total superficies construidas proyecto	213.66m ²



PARCELA 10	
Superficie de parcela	500.13 m ²
Superficie construida vivienda	144.50 m ²
Superficie construida PB	84.43 m ²
Superficie construida P1	54.65 m ²
Superficie terraza cubierta PB	11.65 m ²
Superficie terraza descubierta solarium P1	38.32 m ²
Superficie terraza descubierta pérgola PB	14.51 m ²
Piscina	29.60 m ²
Total superficies construidas proyecto	232.78m ²



"OUR EXPERIENCE IS YOUR GUARANTEE"