



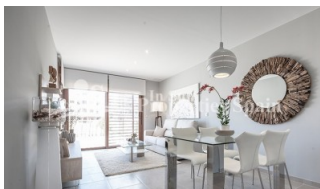
REF: # 5860

ORIHUELA COSTA (VILLAMARTIN LOS DOLSES )



#### INFO

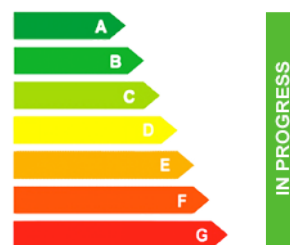
PRICE:	160.000 €
PROPERTY TYPE:	Apartment
CITY:	Orihuela Costa (Villamartin Los Dolses )
BEDROOMS:	2
Bathrooms:	2
Build ( m2 ):	90
Plot ( m2 ):	-
Terrace ( m2 ):	-
Year:	2019
Floor:	-
Old price	-



#### DESCRIPTION

Residencial Gala has been pre-released by a well renowned builder in LOS DOLSES, VILLAMARTIN comprising of 2 & 3 bedroom apartments (90m2-118m2) and there are options of either ground floor with garden, middle floors with terrace or top floor with solarium. Prices start from €160,000 with exterior parking space. Delivery will be in July 2019. The development boasts 4,400m<sup>2</sup> of stunning communal garden areas with 2 swimming pools, 2 Jacuzzis and a children's play area. The rooftop solariums come complete with BBQ, shower, TV aerial and power sockets. The development is within walking distance to Villamartin plaza and the La Zenia Boulevard and close to many bars, shops and restaurants. 5 minutes drive from the sandy beach and just 50 minutes from Alicante International Airport. All apartments are available on PRE-SALE ONLY at this time, allowing interested clients to make a down payment of just €3,000 to reserve the right to choose their preferred property once the development goes on full sale in May 2018.

#### ENERGETIC CERTIFIED



<b>STYLE</b> <ul style="list-style-type: none"><li>• Modern</li><li>• Contemporary</li></ul>	<b>VIEWS</b> <ul style="list-style-type: none"><li>• Panoramic views</li></ul>	<b>DISTANCE TO :</b> <div>Beach : 3 Km</div> <div>Airport: 50 Km</div> <div>Town center : 1 Km</div>	<b>ORIENTATION</b> <div>South East West</div>
<b>FURNITURE</b> <ul style="list-style-type: none"><li>• Not furnished</li></ul>	<b>PARKING</b> <div>Parking no Cars: 1</div>	<b>FLOORING</b> <ul style="list-style-type: none"><li>• Tile floors</li><li>• Stone floors</li></ul>	<b>KITCHEN</b> <ul style="list-style-type: none"><li>• Open kitchen</li><li>• Equipped kitchen</li><li>• Granite countertop</li></ul>
<b>GARDEN AND TERRACES</b> <ul style="list-style-type: none"><li>• Covered terrace</li><li>• Open terrace</li><li>• Play Ground</li><li>• Landscaped</li><li>• BBQ/grill</li><li>• Private garden</li><li>• Communal Garden</li></ul>	<b>EXTRA</b> <ul style="list-style-type: none"><li>• Outdoor jacuzzi</li><li>• Built in wardrobes</li><li>• Reinforced door</li><li>• Double glazed windows</li></ul>		













**"OUR EXPERIENCE IS YOUR GUARANTEE"**