



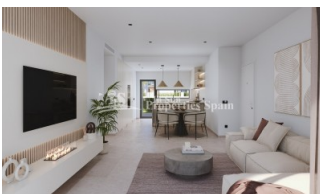
REF: # 11762

COSTA MURCIA (SANTA ROSALIA LAKE AND LIFE RESORT)



INFO

PRICE:	325.000 €
PROPERTY TYPE:	Apartment
CITY:	Costa Murcia (Santa Rosalia Lake and Life Resort)
BEDROOMS:	3
Bathrooms:	2
Build (m2):	111
Plot (m2):	-
Terrace (m2):	-
Year:	-
Floor:	-
Old price	-



DESCRIPTION

NEW BUILD RESIDENTIAL IN PRIVATE GATED RESORT IN PROVINCE OF MURCIA New Build residential complex consist of 42 luxury apartments and penthouses with 2 and 3 bedrooms, 2 bathrooms, open plan kitchen with spacious living room, fitted wardrobes and terraces. Apartments on the ground floor having private garden, middle floors apartments with terrace and penthouses with a large private terrace. This exclusive development has a landscaped communal area which boasts a fabulous contemporary pool, social club and green areas. All apartments come with underground parking and storage room. Located in a private gated resort, with a main access entrance and 24 hours security. The resort is designed around an impressive 126.000 m2 green area. It comprises walking and cycling paths, sport facilities, paddle and tennis courts, a mini-golf course, gardens, dog parks, leisure areas, clubhouse.... Also in the central area is the jewel of the resort, a crystal-clear artificial lake of almost 17.000m2 of water surface,

surrounded by white sandy beaches and palm trees, bringing a piece of the Caribbean to the Murcia Region. There are 2 islands in the lake, one of them has its own bar, there are also “beach Chiringuitos” spread around the lake. The resort is strategically located less than 4 km from the beach and the town of Los Alcázares, where you can practice various water sports, surrounded by several golf courses and the city of Cartagena less than 15 minutes by car and 22 km from Murcia airport, therefore having a wide cultural, gastronomic and sports offer within reach.



VIEWS

- Panoramic views



















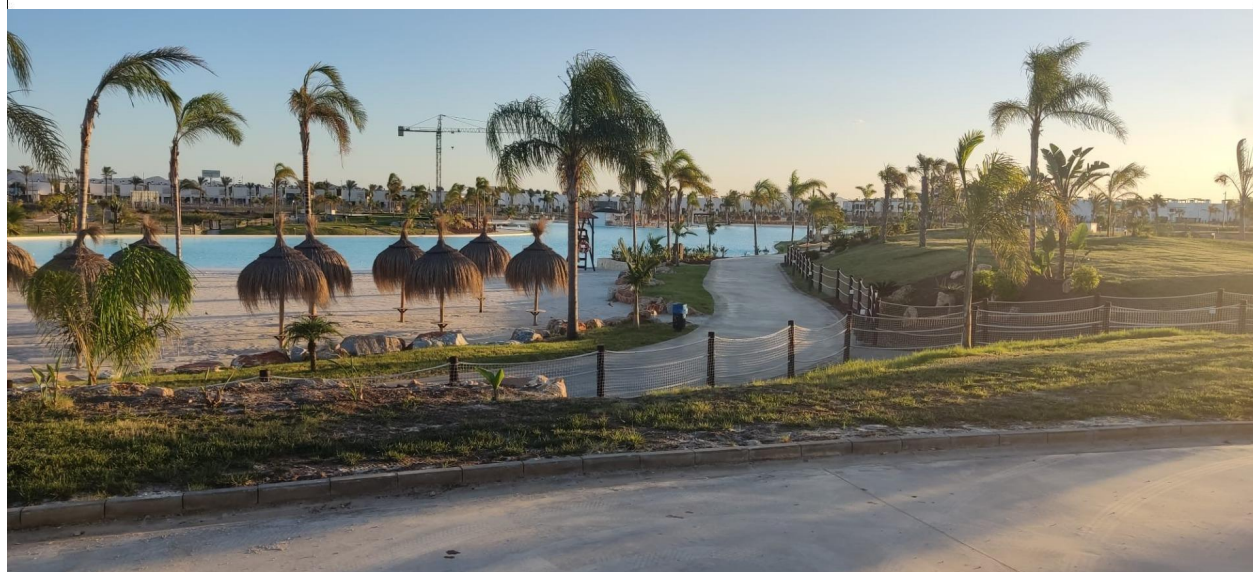
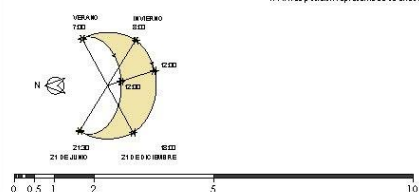
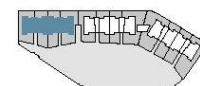
NOTA: La posición representada se encuentra girada 90° con respecto a su posición real.

VIVIENDA

Escala: 1
Nivel: 1
Letra: A

SUPERFICIES

Construida con comunes: 111.49 m²
Útil total terrazas: 19.45 m²







"OUR EXPERIENCE IS YOUR GUARANTEE"