



REF: # 11361

FINESTRAT



#### INFO

**PRICE:** 659.000 €

**PROPERTY TYPE:** Villa

**CITY:** Finestrat

**BEDROOMS:** 3

**Bathrooms:** 3

**Build ( m2 ):** 263

**Plot ( m2 ):** 300

**Terrace ( m2 ):** -

**Year:** -

**Floor:** -

**Old price** -



#### DESCRIPTION

NEW BUILD VILLAS IN FINESTRAT Residential of modern villas has been meticulously designed to capture the beauty of Sierra Cortina and the Mediterranean in every corner. Villas build over 2 floors and has 3 bedrooms, 3 bathrooms, open plan kitchen with lounge, build-in wardrobes, equipped kitchen, private garden with the pool and parking. This villas also features a basement and an English courtyard, providing additional spaces and various possibilities to personalise the home according to your tastes and needs. Residential located next to two golf courses, theme parks, a large shopping centre and a few minutes from the beaches of Benidorm Finestrat located in the Marina Baixa region of the Costa Blanca, close to neighbouring Benidorm and about 40 kilometres from the city of Alicante and the international airport. Benidorm is just a five-minute drive from the properties and offers all the services you would need including shops, bars, restaurants, supermarkets, banks, pharmacies and several private international schools. Close to the beaches of Levante, Poniente and Cala de Finestrat, with more than 6km in length that are among the best in Europe awarded by the European Union with Blue Flags. All leisure services such as the theme parks of Aqua Natura, Terra Mítica, Terra

Natura, Aqualandia and Mundomar, Sierra Cortina and Villaitana Golf courses, hiking and climbing in Puig Campana an incomparable natural setting or enjoy of nautical sports.



**VIEWS**

- Panoramic views

**GARDEN AND  
TERRACES**

- Private garden



















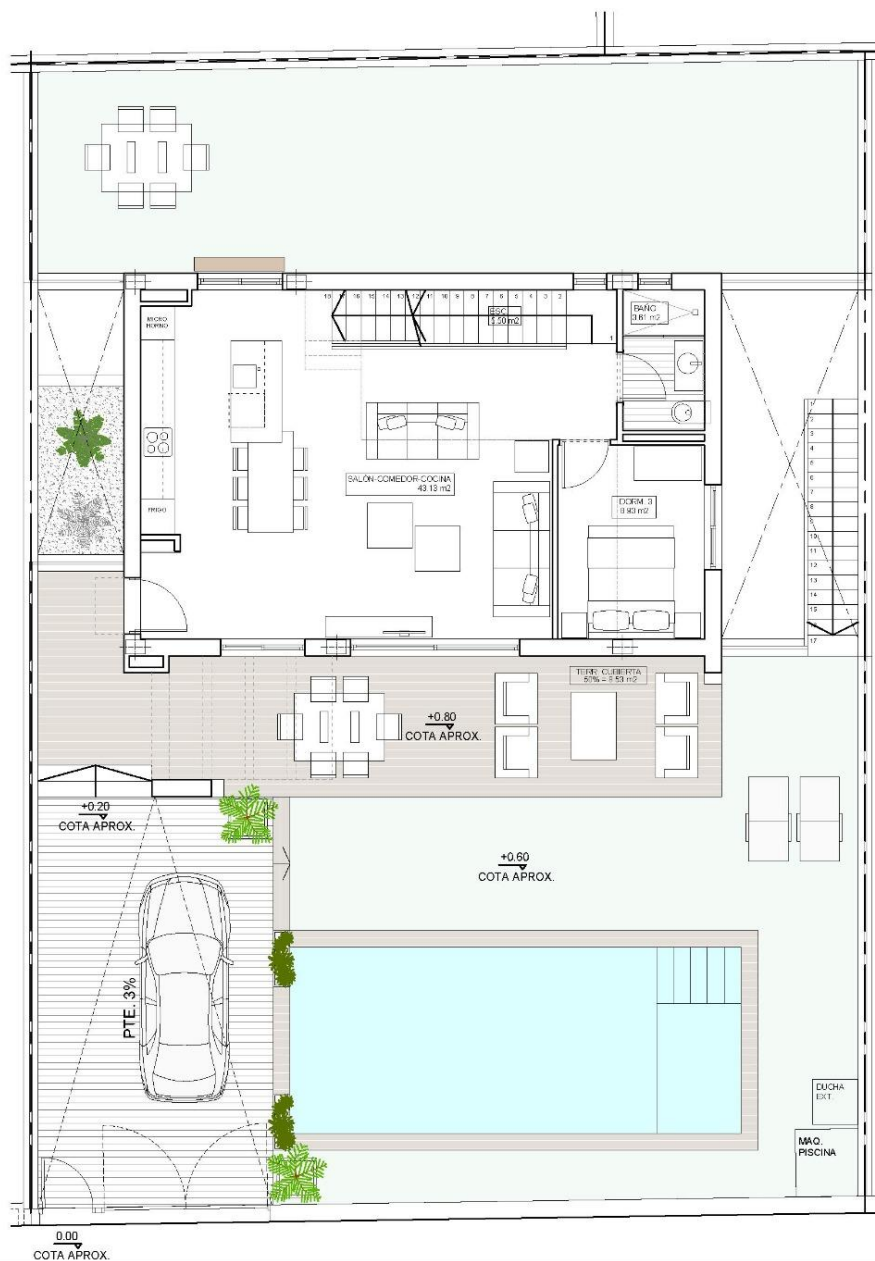












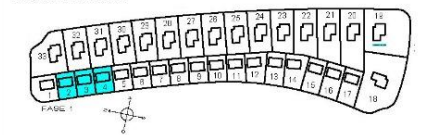
ACABADO DE PAVIMENTOS									
	PAVIMENTO EXTERIOR DE HORMIGÓN IMPRESO, TIPO 2 (DISEÑO DE ACABADO SEGÚN MEMORIA DE CALIDADES)		PAVIMENTO TERRAZA DE PLANTA BAJA SEGÚN LA MEMORIA DE CALIDADES		PAVIMENTO EXTERIOR DE CÉSPED ARTIFICIAL SOBRE SOLERA DE HORMIGÓN O FORJADO		BALDOSAS DE HORMIGÓN APOYADAS SOBRE TERRENO		PELDAÑOS MACERA APOYADOS SOBRE TERRENO (TRAVERTES)

PARCELA 2,3,4  
SUP. APROX. 300 M<sup>2</sup>

ESCALA GRÁFICA



ESQUEMA DE FASES



## SUPERFICIES

SEMISÓTANO CERRADO	67.85 m <sup>2</sup>
PATIO 1	18.70 m <sup>2</sup>
PATIO 2	9.73 m <sup>2</sup>
VIVIENDA CERRADA P. BAJA	71.92 m <sup>2</sup>
TERRAZA SEMI-CUBIERTA P. BAJA	32.60 m <sup>2</sup>
VIVIENDA CERRADA P. PRIMERA	48.28 m <sup>2</sup>
TERRAZA DESCUBIERTA P. PRIMERA	14.51 m <sup>2</sup>
TOTAL	263.59 m <sup>2</sup>

SUP. APROX. PISCINA 26.40 m<sup>2</sup>  
SUP. PARCELA APROX. SEGÚN PLANO DE CONJUNTO

"OUR EXPERIENCE IS YOUR GUARANTEE"