



REF: # 10822

COSTA MURCIA (SAN PEDRO DEL PINATAR)



INFO

PRICE:	205.000 €
PROPERTY TYPE:	Apartment
CITY:	Costa Murcia (San Pedro del Pinatar)
BEDROOMS:	2
Bathrooms:	2
Build (m2):	68
Plot (m2):	-
Terrace (m2):	-
Year:	-
Floor:	-
Old price	-



DESCRIPTION

NEW BUILD BUNGALOW APARTMENTS IN SAN PEDRO DEL PINATAR New Build residential complex of beautiful modern 2 bedrooms bungalow apartments in San Pedro Del Pinatar . This top floor bungalow has a large solarium. All bungalows has a parking space. It has common garden area with swimming pool. San Pedro del Pinatar's privileged location on the Mar Menor and Mediterranean coastline it attracts those with an interest in sailing and watersports, providing marina mooring and sailing clubs, while the beaches and natural mud baths attract those seeking safe sun, sea and sand. San Pedro del Pinatar has an established community and offers an excellent range of activities, including covered swimming pool and sports facilities, as well as a year round programme of social activities by the pleasant winter weather. The benefits of the mud baths, typical of the region, or the calm waters of the Mar Menor, have favoured the growth of Lo Pagán, which currently has all kind of amenities. In addition, it has an excellent location, just 5 minutes from the Commercial Centre Dos Mares. Murcia/Corvera airport

is 30 minutes away and Alicante airport is an hour drive away.



VIEWS

- Panoramic views

**GARDEN AND
TERRACES**

- Open terrace

EXTRA

- Reinforced door



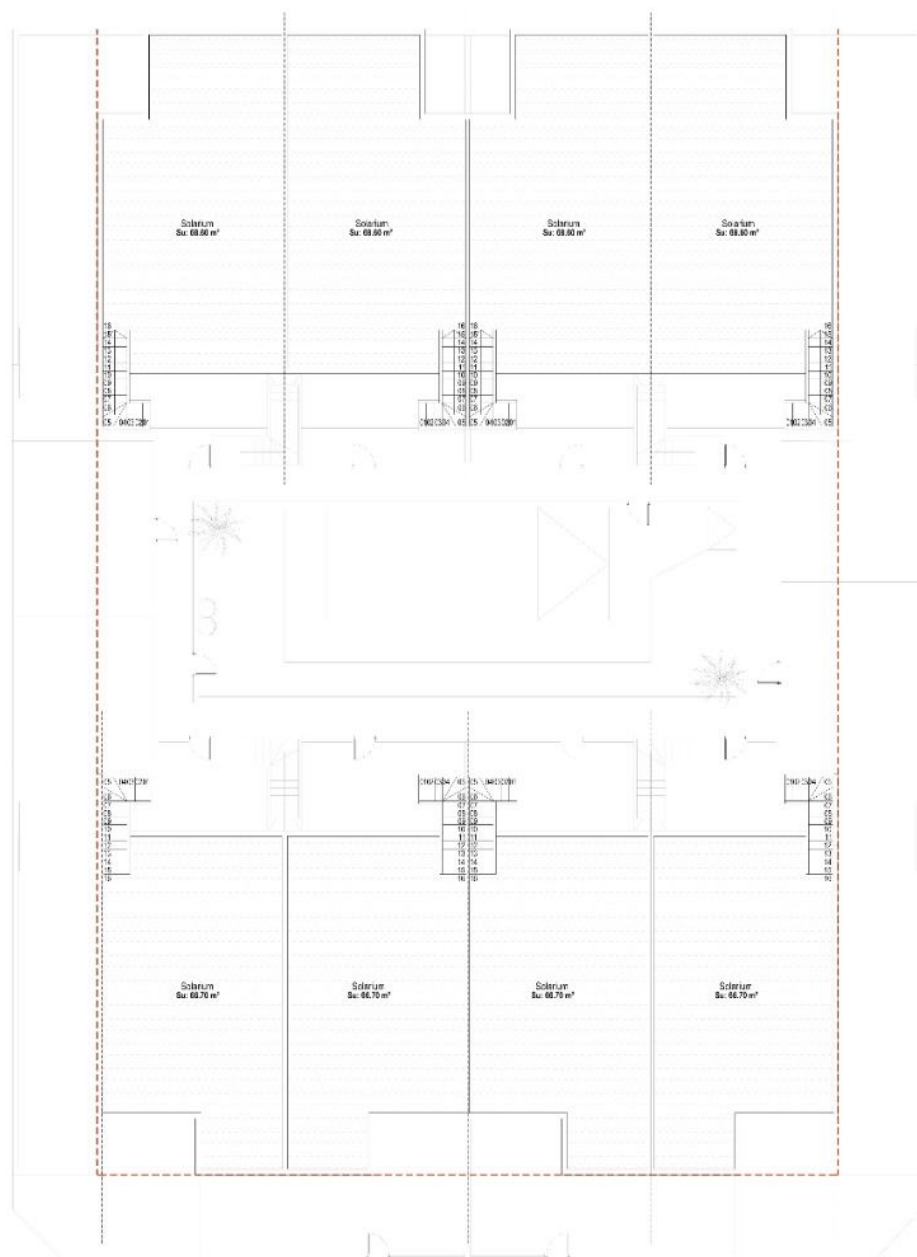








SOLARIUM GENERAL

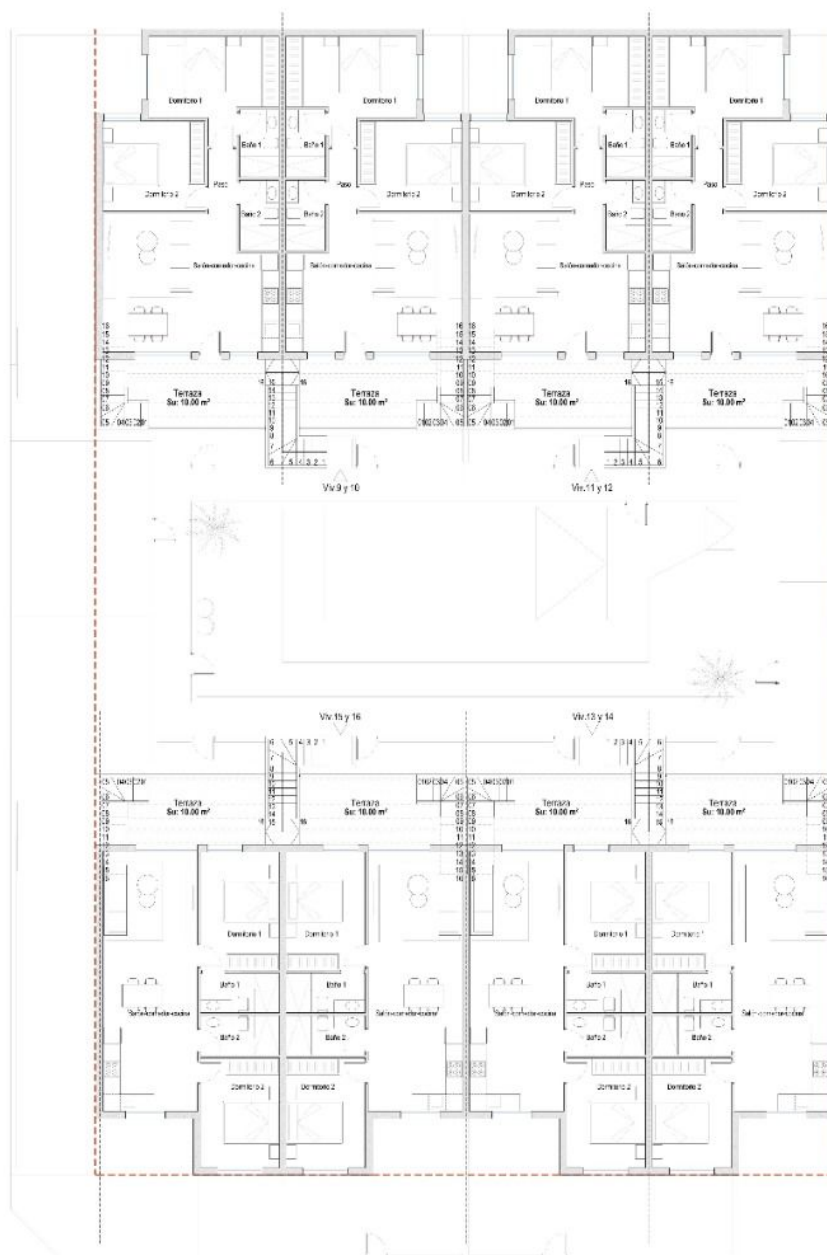


CUADRO DE SUPERFICIES

Vivienda	Planta	Uso	S. ÚT.	S. Com.		
1 y 4	Bajo	Vivienda	11.10 m²	10.00 m²		
		Pasillo	0.20 m²	2.70 m²		
		TOTAL	70.24 m²	96.37 m²		
TOTAL X 2 viviendas					150.85 m²	172.54 m²
2 y 3	Bajo	Vivienda	11.10 m²	7.10 m²		
		Pasillo	0.20 m²	2.70 m²		
		TOTAL	100.20 m²	140.87 m²		
TOTAL X 2 viviendas					150.25 m²	199.54 m²
5 y 8	Bajo	Vivienda	11.10 m²	11.10 m²		
		Pasillo	0.20 m²	2.70 m²		
		TOTAL	75.10 m²	94.20 m²		
TOTAL X 2 viviendas					150.20 m²	198.50 m²
6 y 7	Bajo	Vivienda	11.10 m²	11.10 m²		
		Pasillo	0.20 m²	2.70 m²		
		TOTAL	74.60 m²	92.77 m²		
TOTAL X 2 viviendas					149.20 m²	185.54 m²

Vivienda	Planta	Uso	S. ÚT.	S. Com.	
9 y 12	Bajo	Vivienda	11.10 m ²	11.10 m ²	
		Pasillo	0.20 m ²	2.70 m ²	
		TOTAL	63.10 m ²	72.56 m ²	
		TOTAL X 2 Viviendas		126.20 m ²	145.10 m ²
10 y 11	Bajo	Vivienda	11.10 m ²	11.10 m ²	
		Pasillo	0.20 m ²	2.70 m ²	
		TOTAL	63.10 m ²	71.46 m ²	
		TOTAL X 2 Viviendas		126.20 m ²	142.90 m ²
13 y 16	Bajo	Vivienda	11.10 m ²	11.10 m ²	
		Pasillo	0.20 m ²	2.70 m ²	
		TOTAL	61.40 m ²	70.56 m ²	
		TOTAL X 2 Viviendas		122.80 m ²	141.00 m ²
14 y 15	Bajo	Vivienda	11.10 m ²	11.10 m ²	
		Pasillo	0.20 m ²	2.70 m ²	
		TOTAL	61.40 m ²	69.26 m ²	
		TOTAL X 2 Viviendas		122.80 m ²	138.50 m ²
		TOTAL		3.26 m ²	8.00 m ²
		TOTAL		1.805.40 m ²	1.241.52 m ²

PLANTA PRIMERA GENERAL

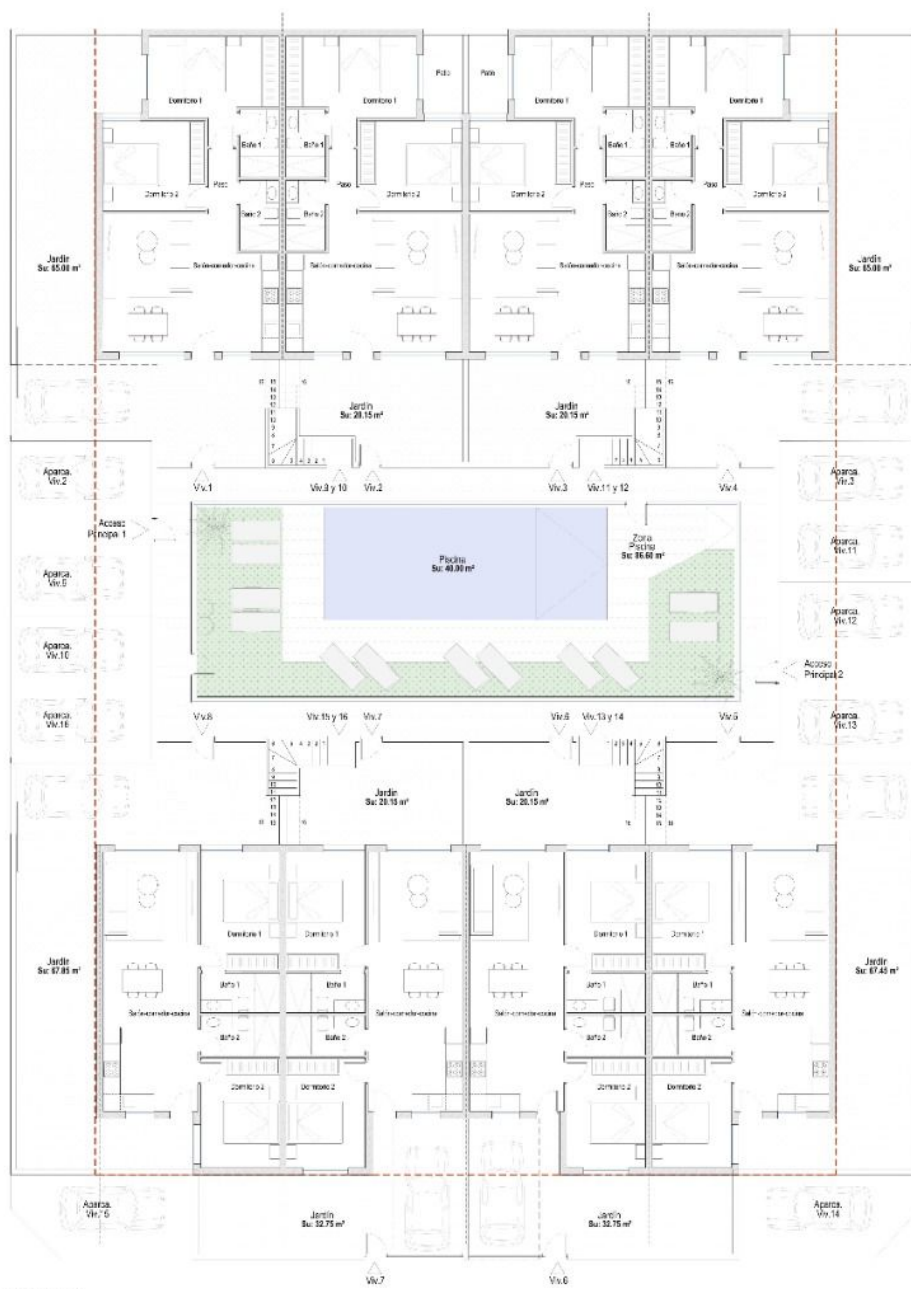


CUADRO DE SUPERFICIES

Vivienda	Partes	Uso	S. Útil	S. Const.
1 y 4	Baja	Vivienda	11.10 m ²	10.00 m ²
		Garaje	10.00 m ²	2.00 m ²
		TOTAL	21.10 m ²	12.00 m ²
2 y 3	Baja	Vivienda	13.10 m ²	12.00 m ²
		Garaje	10.00 m ²	2.00 m ²
		TOTAL	23.10 m ²	14.00 m ²
5 y 8	Baja	Vivienda	11.10 m ²	10.00 m ²
		Garaje	10.00 m ²	2.00 m ²
		TOTAL	21.10 m ²	12.00 m ²
6 y 7	Baja	Vivienda	11.10 m ²	10.00 m ²
		Garaje	10.00 m ²	2.00 m ²
		TOTAL	21.10 m ²	12.00 m ²

Vivienda	Partes	Uso	S. Útil	S. Const.
9 y 12	Baja	Vivienda	11.10 m ²	10.00 m ²
		Garaje	10.00 m ²	2.00 m ²
		TOTAL	21.10 m ²	12.00 m ²
10 y 11	Baja	Vivienda	11.10 m ²	10.00 m ²
		Garaje	10.00 m ²	2.00 m ²
		TOTAL	21.10 m ²	12.00 m ²
13 y 16	Baja	Vivienda	11.10 m ²	10.00 m ²
		Garaje	10.00 m ²	2.00 m ²
		TOTAL	21.10 m ²	12.00 m ²
14 y 15	Baja	Vivienda	11.10 m ²	10.00 m ²
		Garaje	10.00 m ²	2.00 m ²
		TOTAL	21.10 m ²	12.00 m ²

PLANTA BAJA GENERAL



CUADRO DE SUPERFICIES

Vista	Plan	Obj.	S. 191	S. 200
1y4		Viñedo Fogón	13.16 13.00	13.00 13.00
	TOTAL		70.94 m2	56.77 m2
	ICTAL X 2 Vistas		135.85 m2	122.54 m2
2y3	Boje	Viñedo Fogón	13.16 13.00	13.00 13.00
	TOTAL		70.94 m2	56.77 m2
	ICTAL X 2 Vistas		135.85 m2	109.54 m2
5y8	Boje	Viñedo Fogón	13.16 13.00	13.00 13.00
	TOTAL		70.94 m2	56.77 m2
	ICTAL X 2 Vistas		135.85 m2	109.54 m2
6y7	Boje	Viñedo Fogón	13.16 13.00	13.00 13.00
	TOTAL		70.94 m2	56.77 m2
	ICTAL X 2 Vistas		135.85 m2	109.54 m2

Grupos	Países	Uso	S. 18	S. Cont.
9 y 12	América	Vivienda	30,33 m ²	2,05 m ²
		TOTAL	30,33 m ²	22,58 m ²
		TOTAL, 8 2 Viviendas	29,50 m ²	140,18 m ²
10 y 11	América	Vivienda	30,33 m ²	7,63 m ²
		TOTAL	30,33 m ²	21,48 m ²
		TOTAL, 8 2 Viviendas	29,50 m ²	140,18 m ²
13 y 16	América	Vivienda	30,33 m ²	4,02 m ²
		TOTAL	30,33 m ²	70,92 m ²
		TOTAL, 8 2 Viviendas	22,00 m ²	141,30 m ²
14 y 15	América	Vivienda	30,33 m ²	30,33 m ²
		TOTAL	30,33 m ²	69,26 m ²
		TOTAL, 8 2 Viviendas	22,00 m ²	130,50 m ²
TOTAL:			3,58	8,00 m ²
TOTAL:			1.103,48 m ²	1.294,02 m ²









"OUR EXPERIENCE IS YOUR GUARANTEE"