



REF: # 10812

COSTA MURCIA



#### INFO

PRICE: 395.000 €

PROPERTY TYPE: Villa

CITY: Costa Murcia

BEDROOMS: 3

Bathrooms: 3

Build ( m2 ): 143

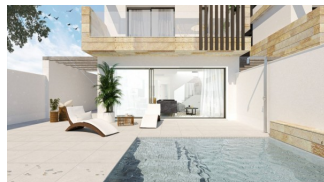
Plot ( m2 ): 155

Terrace ( m2 ): -

Year: -

Floor: -

Old price -



#### DESCRIPTION

**NEW BUILD VILLAS IN SAN PEDRO DEL PINATAR** New Built modern villas located near the centre of San Pedro del Pinatar. Villas build over 2 floors, has 3 bedrooms, 3 bathrooms, open plan kitchen with the lounge area, fitted wardrobes, private garden with the pool and off road parking space, private solarium. From the living room you have direct access to the terrace and the pool. Villas comes with pre-installed ducted A/C, LED lighting package, motorized blinds, appliance package, intercom, aerothermic hot water system and private pool. Nearby you will find supermarkets, restaurants, shops and pharmacies. Within a short drive you can reach several golf courses or the shopping centre Dos Mares. The beautiful beach of Lo Pagan is a few minutes away. San Pedro del Pinatar's privileged location on the Mar Menor and Mediterranean coastline it attracts those with an interest in sailing and water sports, providing marina mooring and sailing clubs, while the beaches and natural mud baths attract those seeking safe sun, sea and sand. San Pedro del Pinatar has an established community and offers an excellent range of activities, including covered swimming pool and sports facilities, as well as a year round programme of social activities by the pleasant

winter weather. The benefits of the mud baths, typical of the region, or the calm waters of the Mar Menor, have favoured the growth of Lo Pagán, wich currently has all kind of amenities. In addition, it has an excellent location, just 5 minutes from the Comercial Center Dos Mares



**VIEWS**

- Panoramic views

**GARDEN AND  
TERRACES**

- Open terrace
- Private garden

**EXTRA**

- Reinforced door



## PROPERTY GALLERY



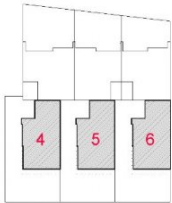






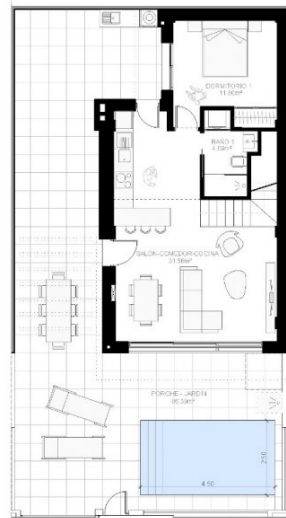




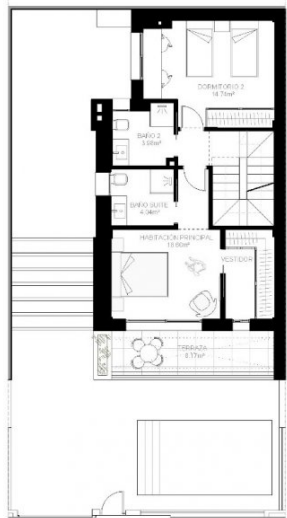


# VIVIENDAS 4 - 5 - 6

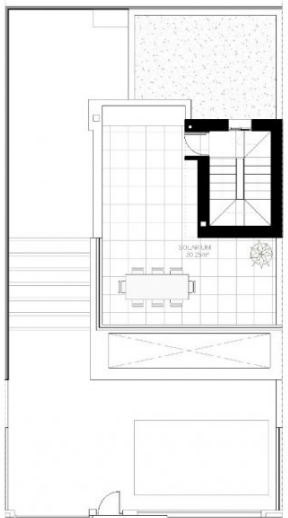
PLANTA BAJA



PLANTA PRIMERA



PLANTA SOLARIUM



SUPERFICIES ÚTILES	
SUPERFICIES ÚTILES VIV 4 - 5 - 6	
PLANTA BAJA	
Salón-comedor cocina	51.56m²
Baño 1	4.95m²
Dormitorio 1	11.80m²
Circulaciones	2.83m²
Superficie útil PB TOTAL	48.93m²
Porche - Jardín Vivienda 4	86.80m²
Porche - Jardín Vivienda 5	86.38m²
Porche - Jardín Vivienda 6	86.38m²
PLANTA PRIMERA	
Dormitorio principal	18.60m²
Dormitorio 2	14.74m²
Baño suite	4.04m²
Baño 2	3.98m²
Circulación	6.04m²
Superficie útil P1 TOTAL	47.13m²
Terraza	8.17m²
PLANTA CUBIERTA	
Circulación	4.19m²
Superficie útil PC TOTAL	4.19m²
Solarium	30.25m²
SUPERFICIE ÚTIL TOTAL	100.25m²

SUPERFICIES CONSTRUIDAS	
SUPERFICIES CONSTRUIDAS VIV 4 - 5 - 6	
Superficie construida PB	73.40m²
Superficie construida P1	69.62m²
Superficie construida TOTAL	143.22m²

SUPERFICIE DE TERRENO ADSCRITO	
SUPERFICIE ADSCRITA VIV 4	160.43m²
SUPERFICIE ADSCRITA VIV 5	155.80m²
SUPERFICIE ADSCRITA VIV 6	155.80m²



E 1/100











***"OUR EXPERIENCE IS YOUR GUARANTEE"***