



REF: # 10604

FINESTRAT



INFO

PRICE: 249.900 €

PROPERTY TYPE: Townhouse

CITY: Finestrat

BEDROOMS: 2

Bathrooms: 2

Build (m2): 131

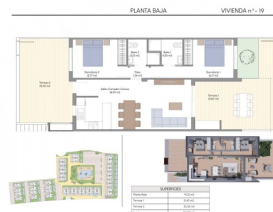
Plot (m2): -

Terrace (m2): -

Year: -

Floor: -

Old price -



DESCRIPTION

NEW BUILD RESIDENTIAL COMPLEX IN FINESTRAT New Build residential complex in Finestrat located in one of the best areas to live in the Costa Blanca. New Build complex consists of 20 bungalows with 2 bedrooms and 2 bathrooms with access to the common areas and swimming pool. Ground floor bungalows have 131 m² built area, distributed in a spacious living-dining room with open kitchen, 2 large bedrooms and 2 complete bathrooms, plus 2 terraces of 31.40 m² and 25.35 m². The top floor bungalows have 178.51 m² built area, distributed in 2 spacious bedrooms, 2 bathrooms, a living-dining room with open-plan kitchen, a terrace of 18.31 m² and a magnificent solarium of 85.82 m². All the bungalows come with parking space. The properties have magnificent views of the sea and the Benidorm skyline. Finestrat is located in the Marina Baixa region of the Costa Blanca, close to neighbouring Benidorm and about 40 kilometres from the city of Alicante and the international airport. Benidorm is just a five-minute drive from the properties and offers all the services you would need including shops, bars, restaurants, supermarkets, banks, pharmacies and several private international schools. Close to the beaches of Levante, Poniente and

Cala de Finestrat, with more than 6km in length that are among the best in Europe awarded by the European Union with Blue Flags. All leisure services such as the theme parks of Aqua Natura, Terra Mítica, Terra Natura, Aqualandia and Mundomar, Sierra Cortina and Villaitana Golf courses, hiking and climbing in Puig Campana an incomparable natural setting or enjoy of nautical sports.



VIEWS

- Panoramic views

**GARDEN AND
TERRACES**

- Open terrace
- Private garden

EXTRA

- Reinforced door

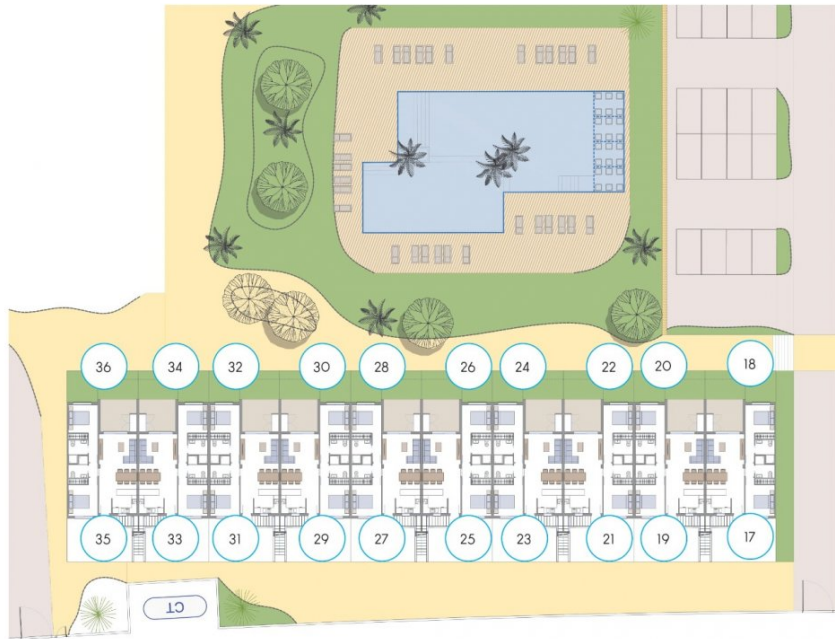




PLANTA BAJA

VIVIENDA n°- 19





**MIRADOR
HILLS**
resort

LAS DIMENSIONES Y LAS SUPERFICIES QUE APARECEN EN ESTE DOCUMENTO SON APROXIMADAS Y PODRÁN SER OBJETO DE MODIFICACIÓN DURANTE LA REDACCIÓN DE LOS PROYECTOS BÁSICO Y DE EJECUCIÓN











"OUR EXPERIENCE IS YOUR GUARANTEE"