



REF: # 10471

ROJALES



INFO

PRICE: 282.900 €

PROPERTY TYPE: Townhouse

CITY: Rojales

BEDROOMS: 3

Bathrooms: 2

Build (m2): 110

Plot (m2): 110

Terrace (m2): -

Year: -

Floor: -

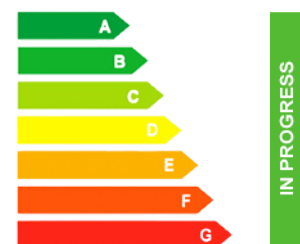
Old price -



DESCRIPTION

NEW BUILD TOWNHOUSES IN ROJALES New Build modern townhouses in Rojales. Townhouses has 3 bedrooms, 2 bathrooms, open plan kitchen, living room with direct access to the terrace, parking space. An options for a solarium and a private pool at an extra cost. There a 3 golf courses nearby and the blue flag beaches are just a short 10 minute drive away. Rojales it is a lovely village with all services such as supermarkets, pharmacies, banks, restaurants and natural park located very close to the villas. There are several golf courses close by as well as water parks in nearby Rojales and Torrevieja. Alicante [amp;] Murcia airports are 45 minutes drive away.

ENERGETIC CERTIFIED



VIEWS

- Panoramic views

**GARDEN AND
TERRACES**

- Open terrace
- Private garden

EXTRA

- Reinforced door





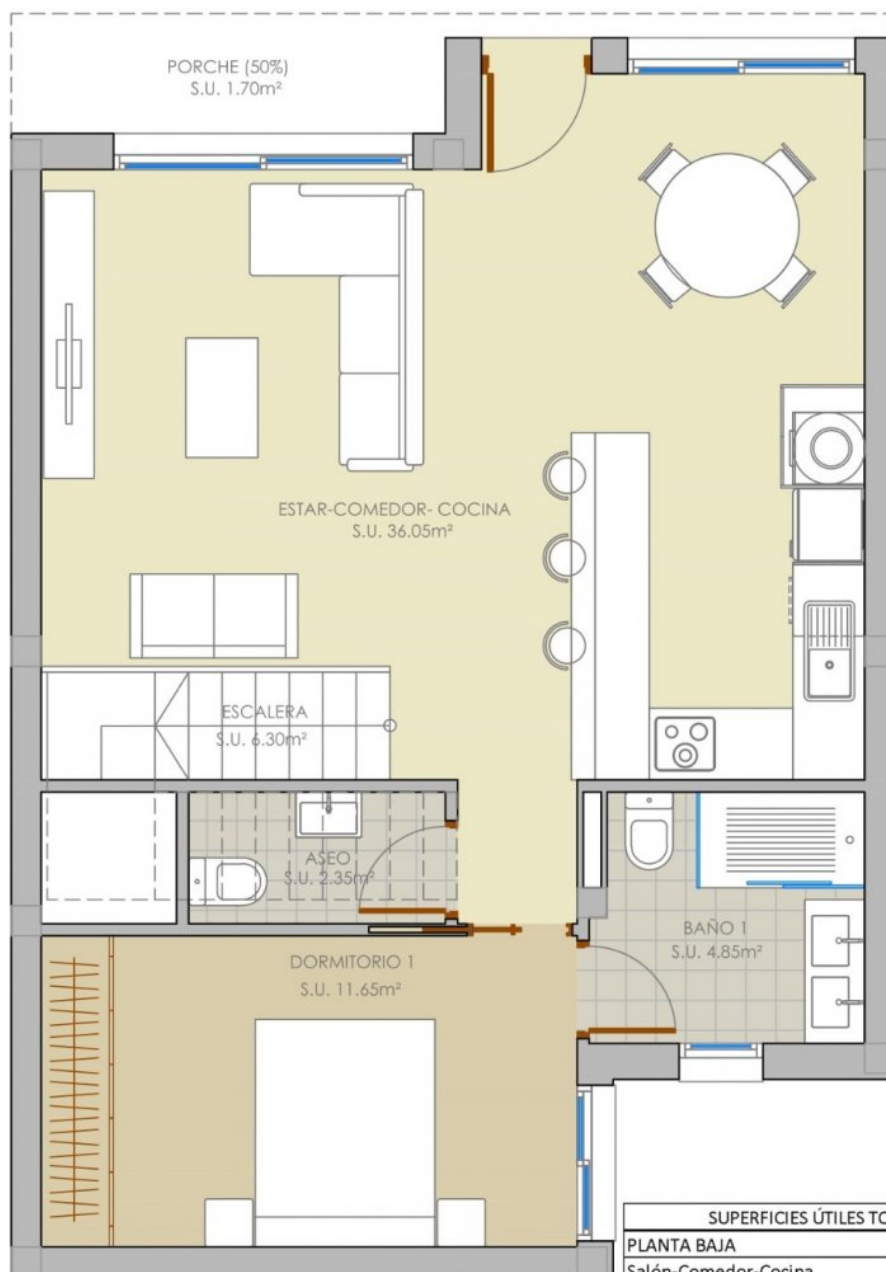






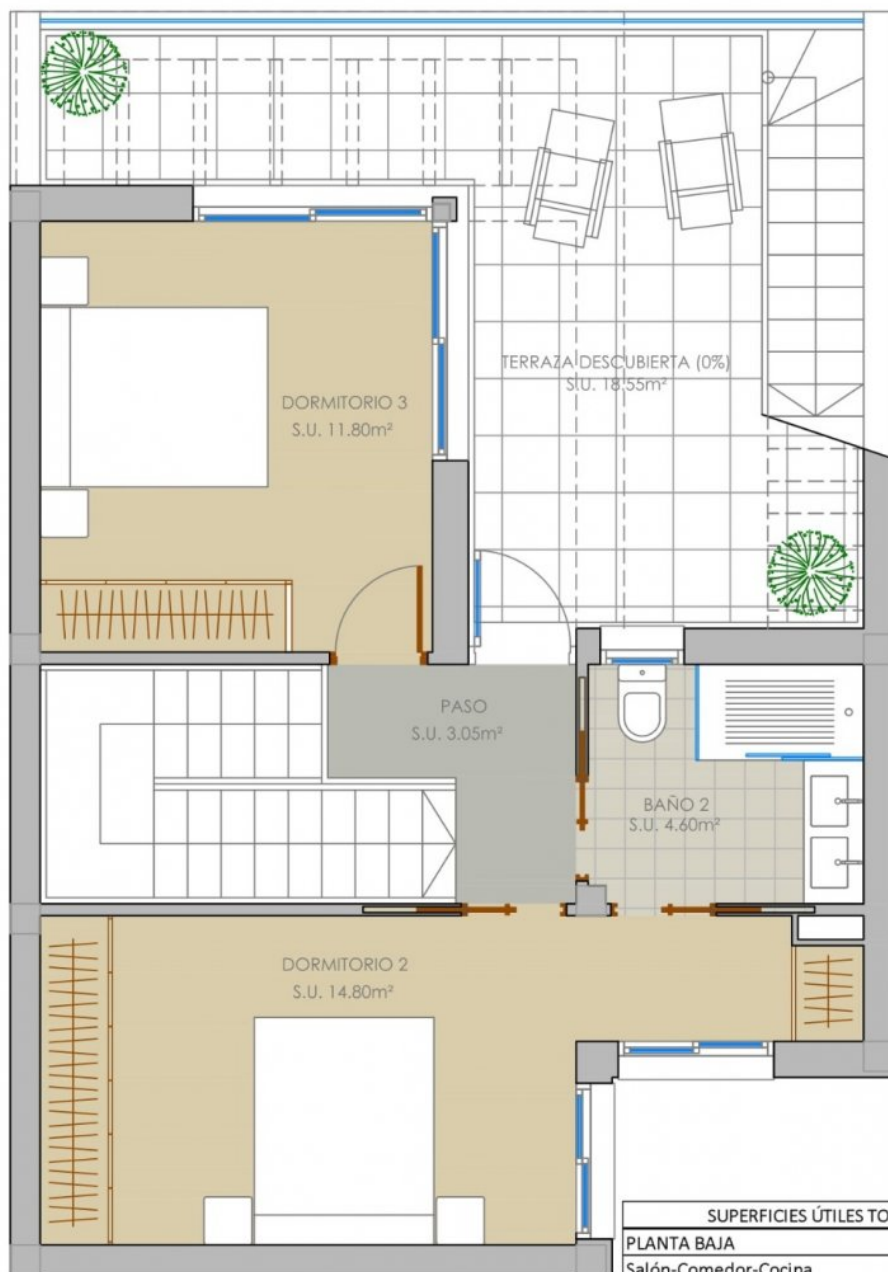






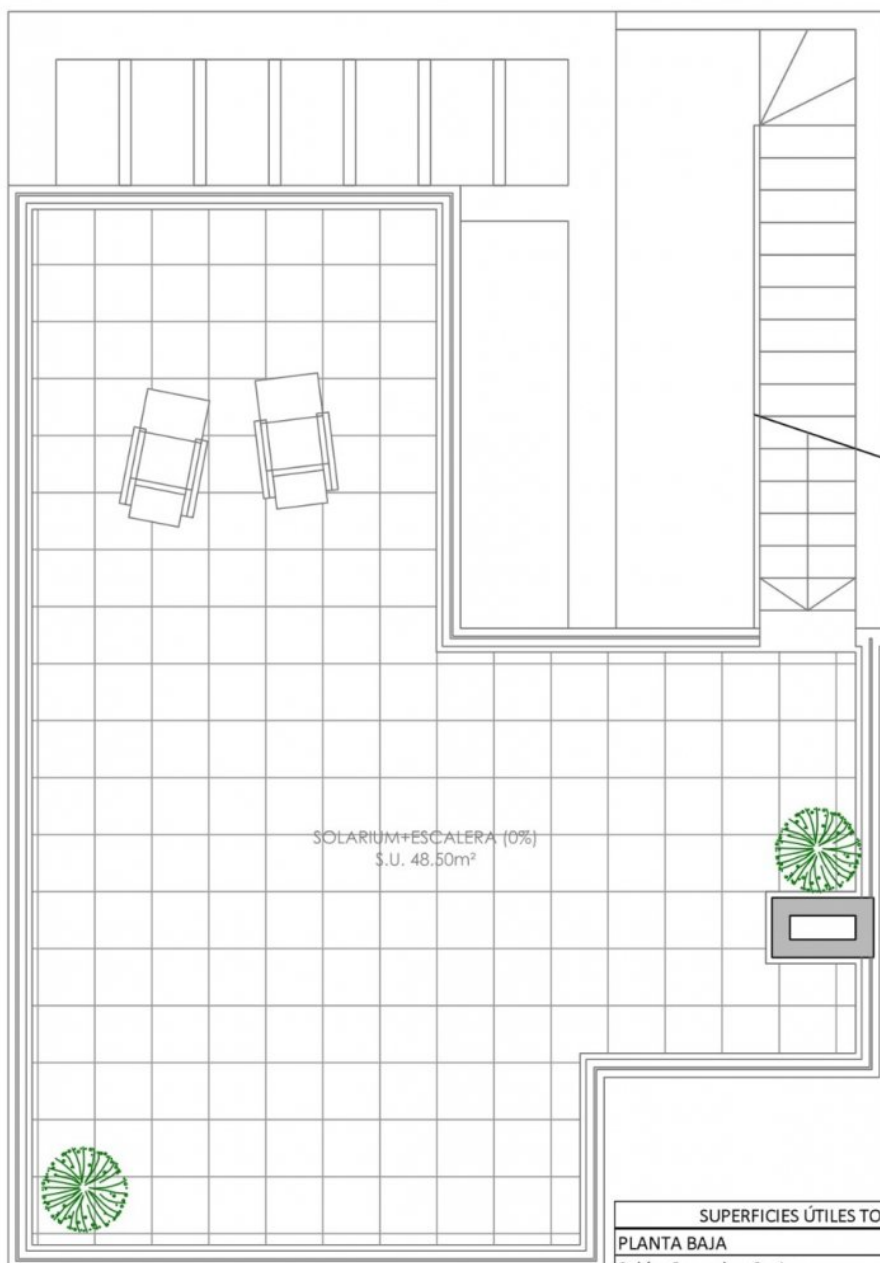
SUPERFICIES CONSTRUIDAS TOTALES	
Planta baja	
Vivienda cerrada	66,65 m ²
Porche (50%)	1,70 m ²
Planta piso	
Vivienda cerrada	42,00 m ²
Terraza descubierta (0%)	18,55 m ²
Planta cubierta	
Solarium+escalera (0%)	48,50 m ²
TOTAL	110,35 m²

SUPERFICIES ÚTILES TOTALES	
PLANTA BAJA	
Salón-Comedor-Cocina	36,05 m ²
Baño 1	4,85 m ²
Aseo	2,35 m ²
Dormitorio 1	11,65 m ²
Escalera	6,30 m ²
Porche (50%)	1,70 m ²
PLANTA PISO	
Paso	3,05 m ²
Baño 2	4,60 m ²
Dormitorio 2	14,80 m ²
Dormitorio 3	11,80 m ²
Terraza descubierta (0%)	18,55 m ²
PLANTA CUBIERTA	
Solarium+escalera(0%)	48,50 m ²
TOTAL	97,15 m²



SUPERFICIES CONSTRUIDAS TOTALES	
Planta baja	
Vivienda cerrada	66,65 m ²
Porche (50%)	1,70 m ²
Planta piso	
Vivienda cerrada	42,00 m ²
Terraza descubierta (0%)	18,55 m ²
Planta cubierta	
Solarium+escalera (0%)	48,50 m ²
TOTAL	110,35 m ²

SUPERFICIES ÚTILES TOTALES	
PLANTA BAJA	
Salón-Comedor-Cocina	36,05 m ²
Baño 1	4,85 m ²
Aseo	2,35 m ²
Dormitorio 1	11,65 m ²
Escalera	6,30 m ²
Porche (50%)	1,70 m ²
PLANTA PISO	
Paso	3,05 m ²
Baño 2	4,60 m ²
Dormitorio 2	14,80 m ²
Dormitorio 3	11,80 m ²
Terraza descubierta (0%)	18,55 m ²
PLANTA CUBIERTA	
Solarium+escalera(0%)	48,50 m ²
TOTAL	97,15 m ²



SUPERFICIES CONSTRUIDAS TOTALES	
Planta baja	
Vivienda cerrada	66,65 m ²
Porche (50%)	1,70 m ²
Planta piso	
Vivienda cerrada	42,00 m ²
Terraza descubierta (0%)	18,55 m ²
Planta cubierta	
Solarium+escalera (0%)	48,50 m ²
TOTAL	110,35 m²

SUPERFICIES ÚTILES TOTALES	
PLANTA BAJA	
Salón-Comedor-Cocina	36,05 m ²
Baño 1	4,85 m ²
Aseo	2,35 m ²
Dormitorio 1	11,65 m ²
Escalera	6,30 m ²
Porche (50%)	1,70 m ²
PLANTA PISO	
Paso	3,05 m ²
Baño 2	4,60 m ²
Dormitorio 2	14,80 m ²
Dormitorio 3	11,80 m ²
Terraza descubierta (0%)	18,55 m ²
PLANTA CUBIERTA	
Solarium+escalera(0%)	48,50 m ²
TOTAL	97,15 m²



"OUR EXPERIENCE IS YOUR GUARANTEE"