



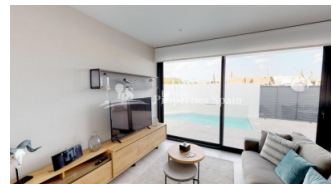
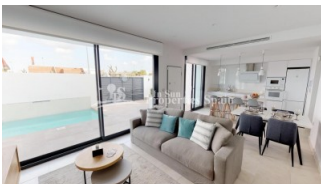
REF: # 7014

COSTA MURCIA (SAN JAVIER)



#### INFO

PRICE:	274.950 €
PROPERTY TYPE:	Villa
CITY:	Costa Murcia (San Javier)
BEDROOMS:	3
Bathrooms:	2
Build ( m2 ):	91
Plot ( m2 ):	258
Terrace ( m2 ):	-
Year:	-
Floor:	-
Old price	-

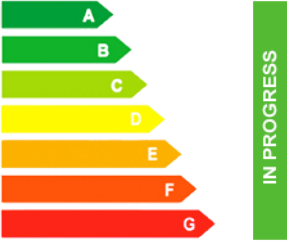


#### DESCRIPTION

This new release project "Monte Vista" offers stunning 3 bedroom, 2 bathroom Villas just 200m from MAR DE CRISTAL BEACH, SAN JAVIER. This small project offers Villas on one level with generous open terraces and a large rooftop solarium. These off plan villas will be constructed within 10 months from contract and feature a large spacious open plan lounge with dining area and separate kitchen which for a limited time comes with appliances. The 3 double bedrooms all come with fitted wardrobes and the master of which is en-suite, there is also a family bathroom and utility room – all 3 bedrooms have access to a unique rear enclosed patio area. Outside the property ... a terrace with walkway and patio areas offering lots of 'alfresco dining' options for a private pool, driveway for off road parking and an external staircase to access the roof solarium. For a limited time, the Villas also come with Installed AC, Interior and exterior LED lighting, BBQ, Private pool and LED mirrors in both bathrooms. The Mar Menor is the ideal destination to spend some warm days of rest in charming and peaceful towns such as Lo Pagán, San Pedro del Pinatar, Santiago de la Ribera, San Javier, Los Alcázares, Mar de Cristal, Playa Honda, Islas Menores , Los Urrutias and

Los Nietos, of beaches mostly awarded with the Blue Flag of the European Community. You will find all the amenities for daily living and a relaxing vacation on hand. 30 minutes from Murcia Corvera (RMU) Airport. Delivery in 10 months



STYLE	AIRCONDITIONING	DISTANCE TO :	ORIENTATION
<ul style="list-style-type: none"> <li>Modern</li> <li>Contemporary</li> </ul>	<ul style="list-style-type: none"> <li>Central airconditioning</li> </ul>	Beach : 200 m Airport: 30 Km Town center : 1 Km	South East West
FURNITURE	PARKING	MAIN LIVING AREA	FLOORING
<ul style="list-style-type: none"> <li>Not furnished</li> </ul>	Parking no Cars: 2	<ul style="list-style-type: none"> <li>Bathroom en-suite</li> </ul>	<ul style="list-style-type: none"> <li>Tile floors</li> <li>Stone floors</li> </ul>
KITCHEN	GARDEN AND TERRACES	EXTRA	ENERGETIC CERTIFIED
<ul style="list-style-type: none"> <li>Open kitchen</li> <li>Equipped kitchen</li> </ul>	<ul style="list-style-type: none"> <li>Open terrace</li> <li>Stone walls</li> <li>Private garden</li> </ul>	<ul style="list-style-type: none"> <li>Built in wardrobes</li> <li>Reinforced door</li> <li>Double glazed windows</li> </ul>	 <p>The image shows a vertical energy efficiency scale with seven horizontal bars labeled A through G. Bar A is dark green, B is green, C is light green, D is yellow, E is orange, F is red-orange, and G is red. To the right of these bars is a vertical green bar with the text 'IN PROGRESS' written vertically inside it.</p>

**"OUR EXPERIENCE IS YOUR GUARANTEE"**