



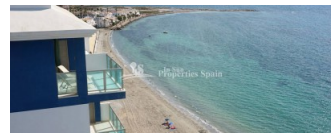
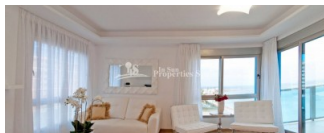
REF: # 6794

ORIHUELA COSTA (LA MANGA)



#### INFO

PRICE:	180.000 €
PROPERTY TYPE:	Townhouse
CITY:	Orihuela Costa (La manga)
BEDROOMS:	2
Bathrooms:	2
Build ( m2 ):	77
Plot ( m2 ):	-
Terrace ( m2 ):	-
Year:	2019
Floor:	-
Old price	-

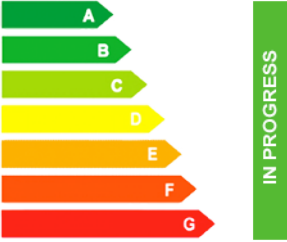


#### DESCRIPTION

Located first line on the coast of LA MANGA DEL MAR MENOR and situated in a unique and exclusive area, between two different seas, Mar Menor and Mediterranean Sea is this stunning 4 tower development. Each of the four towers has ten floors in each. This is a 2 bed, 2 bath 77'5m2 Duplex with direct community access to the beach, three amazing swimming pools and communal areas all inside the residential. Its design has been inspired by the sea, fact that is well represented in the facade (white and blue) with a modern design. Views from the highest terraces are spectacular. It's about 30 minutes by car from Cartagena, the main city of the region and next to a nice golf course. The area has all kind of services such as bars, restaurants, supermarkets, shops, medical centers, dentists, pharmacies, golf courses, marinas, nautical sports and multiple leisure and free time options. La Manga del Mar Menor is a natural strip of land surrounded by two seas, the Mar Menor and the Mediterranean Sea. It's one of the most exotic areas in Spain. It's a perfect place to enjoy to the fullest of the sea, above all in the spring time and the summer too, when is the high season and there are a lot of nautical sports.

#### ENERGETIC CERTIFIED



STYLE	VIEWS	AIRCONDITIONING	DISTANCE TO :
<ul style="list-style-type: none"> <li>Modern</li> <li>Contemporary</li> </ul>	<ul style="list-style-type: none"> <li>Panoramic views</li> <li>Sea views</li> </ul>	<ul style="list-style-type: none"> <li>Central airconditioning</li> </ul>	Beach : 200 m Airport: 30 Km Town center : 500 m
ORIENTATION	FURNITURE	PARKING	FLOORING
South	<ul style="list-style-type: none"> <li>Not furnished</li> </ul>	Parking no Cars: 1	<ul style="list-style-type: none"> <li>Tile floors</li> <li>Stone floors</li> </ul>
KITCHEN	GARDEN AND TERRACES	EXTRA	ENERGETIC CERTIFIED
<ul style="list-style-type: none"> <li>Open kitchen</li> <li>Equipped kitchen</li> </ul>	<ul style="list-style-type: none"> <li>Open terrace</li> <li>Landscaped</li> <li>Stone walls</li> <li>Communal Garden</li> </ul>	<ul style="list-style-type: none"> <li>Built in wardrobes</li> <li>Reinforced door</li> <li>Double glazed windows</li> <li>Lift</li> </ul>	 <p>The image shows a vertical energy efficiency scale with seven horizontal bars labeled A through G. The bars are colored in a gradient from dark green at the top to red at the bottom. A vertical green bar on the right side of the scale is labeled 'IN PROGRESS'.</p>

**"OUR EXPERIENCE IS YOUR GUARANTEE"**