



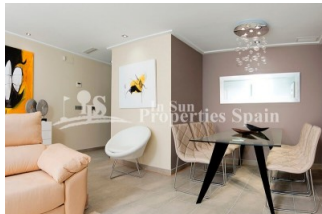
REF: # 6718

ALICANTE (EL CAMPELLO)



#### INFO

PRICE:	395.000 €
PROPERTY TYPE:	Townhouse
CITY:	Alicante (El Campello)
BEDROOMS:	3
Bathrooms:	3
Build ( m2 ):	197
Plot ( m2 ):	-
Terrace ( m2 ):	35
Year:	2019
Floor:	-
Old price	-



#### DESCRIPTION

In front of the sea at EL CAMPELLO, ALICANTE, with spectacular views; this new development is the perfect environment for those who prefer to enjoy life to the fullest. The houses have a private garden and facilities, essential for those looking for a small additional luxury such as: elevator, private garage with storage room or solarium terrace, where impressive direct views of the sea stand out. The promotion is formed by townhouses. This one of a generous 196'95m2 offers 3 spacious bedrooms where the main protagonist is natural light, 2 luxurious bathrooms, 1 toilet and living room with separate designer kitchen complete with silestone worktops, oven, hob and extractor hood. 15'5m2 terrace and 18'75m2 patio. Pre-Installation of AC. There is also a nice community area with swimming pool overlooking the sea, green areas and childrens play area. El Campello is a modern coastal resort, which boasts 23 kilometres of quiet, pearly white, sandy beaches. Situated 14km north of Alicante. It has excellent road and rail connections, with

Alicante International Airport just 30km away and Alicante train station just 20km away. The Paseo del Mar (promenade) is almost 2 miles long and makes for a lovely evening stroll in the setting sun. If Golf is your sport, then there are many championship golf courses in and around Alicante, all within one hour's drive of here. The area enjoys a typical Mediterranean climate; as is it is surrounded by mountain ranges, it can sometimes get very hot in summer, but it is protected against the cold North winds in winter. The area averages nearly 3,000 hours of sunshine each year and the average temperature easily exceeds 20 degrees. In 1986 the World Health Organisation recommended the climate of the area as one of the most equitable in the world - neither too hot in the summer nor too cold in the winter. On average it can boast 325 sunny days each year making it an ideal all year round destination.



STYLE	VIEWS	AIRCONDITIONING	DISTANCE TO :
<ul style="list-style-type: none"> <li>Modern</li> <li>Contemporary</li> </ul>	<ul style="list-style-type: none"> <li>Panoramic views</li> <li>Sea views</li> <li>Mountain views</li> </ul>	<ul style="list-style-type: none"> <li>Central airconditioning</li> </ul>	Beach : 200 m Airport: 30 Km Town center : 1 Km
ORIENTATION	FURNITURE	PARKING	MAIN LIVING AREA
South west	<ul style="list-style-type: none"> <li>Not furnished</li> </ul>	Garage no Cars : 1 Parking no Cars: 1	<ul style="list-style-type: none"> <li>Storage</li> <li>Bathroom en-suite</li> </ul>
FLOORING	KITCHEN	GARDEN AND TERRACES	ENERGETIC CERTIFIED
<ul style="list-style-type: none"> <li>Tile floors</li> <li>Stone floors</li> </ul>	<ul style="list-style-type: none"> <li>Closed kitchen</li> <li>Equipped kitchen</li> </ul>	<ul style="list-style-type: none"> <li>Covered terrace</li> <li>Open terrace</li> <li>Landscaped</li> <li>Private garden</li> <li>Communal Garden</li> </ul>	<div> <div> <div>A</div> <div>B</div> <div>C</div> <div>D</div> <div>E</div> <div>F</div> <div>G</div> </div> <div>           In wardrobes            Reinforced door            Double glazed windows            Storage room         </div> <div>IN PROGRESS</div> </div>

"OUR EXPERIENCE IS YOUR GUARANTEE"