



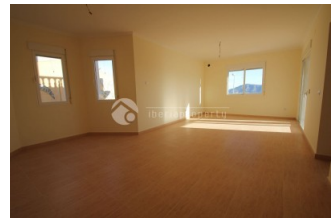
REF: # 6652

ALFAZ DEL PI



#### INFO

PRICE:	REQUEST
PROPERTY TYPE:	Villa
CITY:	Alfaz del Pi
BEDROOMS:	3
Bathrooms:	2
Build ( m2 ):	160
Plot ( m2 ):	1.600
Terrace ( m2 ):	8 + 60 +80 +20
Year:	2017
Floor:	-
Old price	-




#### DESCRIPTION

Beautiful detached new built villa in Partida Cautivador in Alfaz. Located between Alfaz and La Nucia. Quiet location and close to all facilities and the Norwegian School. At 6 km from the beach of Albir and Benidorm. Consists of 2 floors with large terraces and private pool. Spectacular views of the surroundings. Panoramic view of the sea and mountains. Southern orientation. Large living room of 40 m2 and equipped kitchen of 14 m2 which both open onto the large terrace. 3 spacious bedrooms (master bedroom 25 m2), 2 bathrooms (1 on suite with jacuzzi), built-in wardrobes. Separately adjustable underfloor heating throughout the house, pre-installation air conditioning. Reinforced doors and double glazing. Large storage room and laundry room. Basement with many possibilities. Private pool and outdoor kitchen.

#### ENERGETIC CERTIFIED



<b>STYLE</b> <ul style="list-style-type: none"> <li>Contemporary</li> </ul>	<b>VIEWS</b> <ul style="list-style-type: none"> <li>Panoramic views</li> <li>Sea views</li> <li>Mountain views</li> </ul>	<b>AIRCONDITIONING</b> <ul style="list-style-type: none"> <li>Livingroom</li> <li>Kitchen</li> <li>Bedrooms</li> </ul>	<b>DISTANCE TO :</b> <p>Beach : 6 Km</p>
<b>ORIENTATION</b> <p>South</p>	<b>PARKING</b> <p>Garage no Cars : 3</p> <p>Parking no Cars: 2</p>	<b>TAX</b> <p>I.B.I : 900 €</p>	<b>MAIN LIVING AREA</b> <ul style="list-style-type: none"> <li>Storage</li> <li>Bathroom en-suite</li> </ul>
<b>FLOORING</b> <ul style="list-style-type: none"> <li>Tile floors</li> <li>Laminate floors</li> </ul>	<b>KITCHEN</b> <ul style="list-style-type: none"> <li>Closed kitchen</li> <li>Granite countertop</li> </ul>	<b>GARDEN AND TERRACES</b> <ul style="list-style-type: none"> <li>Covered terrace</li> <li>Open terrace</li> <li>Landscaped</li> <li>Fenced</li> <li>Stone walls</li> <li>Outdoor kitchen</li> <li>Private garden</li> </ul>	<b>HEATING</b> <ul style="list-style-type: none"> <li>Central gas heating</li> <li>Floor heating</li> <li>Floor heating bathrooms</li> </ul>
<b>EXTRA</b> <ul style="list-style-type: none"> <li>Indoor jacuzzi</li> <li>Built in wardrobes</li> <li>Reinforced door</li> <li>Double glazed windows</li> <li>Satellite TV</li> <li>Storage room</li> <li>Laundry room</li> <li>Internet</li> </ul>	<b>ENERGETIC CERTIFIED</b> 		

**"OUR EXPERIENCE IS YOUR GUARANTEE"**