



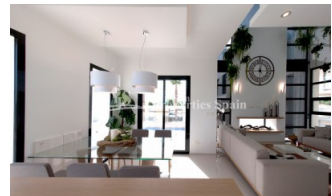
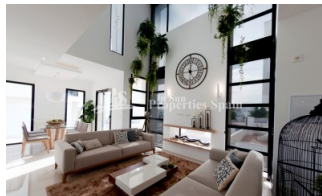
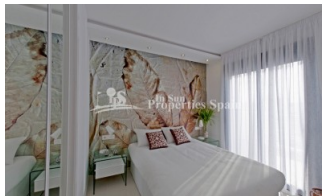
REF: # 4510

QUESADA-ROJALES (CIUDAD QUESADA)



INFO

| | |
|-----------------|----------------------------------|
| PRICE: | 365.000 € |
| PROPERTY TYPE: | Villa |
| CITY: | Quesada-Rojales (Ciudad Quesada) |
| BEDROOMS: | 3 |
| Bathrooms: | 3 |
| Build (m2): | 191 |
| Plot (m2): | 311 |
| Terrace (m2): | 51 |
| Year: | 2017 |
| Floor: | - |
| Old price | - |




DESCRIPTION

A superb Detached Villa, Model Jade Esp, located in Catherine Residential, La Fiesta II, Ciudad Quesada. An exclusive residential, mainly composed of individual villas in Doña Pepa and Lo Pepin. This independent villa in two heights, contains 3 bedrooms, one of them in ground floor. In addition to a large living room looking towards the pool with an open kitchen where you can enjoy with family or Friends while you cook. In this villa, you will be able to enjoy of our climate in 2 different spaces as the pool area next to the garden and a big solárium. Located next to comercial areas, pharmacies, airports, leisure areas and more. Here you will find good restaurants and the popular 4-star hotel, La Laguna. Ciudad Quesada is just 3 km from the sandy beaches of Guardamar, El Moncayo and La Mata. A bit more away are the beaches of Torrevieja and Orihuela Costa, where we find the famous shopping centers Habaneras and La Zenia Boulevard. Surrounded by golf courses like La Finca, La Marquesa, Villamartin, Campoamor and Las Colinas Golf. Close to bigger cities such as Alicante and Murcia.

Nearest Airports: San Javier (Murcia) - Approx 30 minute drive
Alicante Airport - Approx 30 minute drive



| | | | |
|---|---|---|---|
| STYLE <ul style="list-style-type: none"> Modern Contemporary | VIEWS <ul style="list-style-type: none"> Panoramic views | DISTANCE TO : <div>Beach : 3 Km</div> <div>Airport: 30 Km</div> <div>Town center : 1 Km</div> | ORIENTATION <div>South East West</div> |
| FURNITURE <ul style="list-style-type: none"> Not furnished | PARKING <div>Parking no Cars: 1</div> | FLOORING <ul style="list-style-type: none"> Tile floors Stone floors | KITCHEN <ul style="list-style-type: none"> Open kitchen Equipped kitchen Granite countertop |
| GARDEN AND TERRACES <ul style="list-style-type: none"> Open terrace Landscaped Private garden | EXTRA <ul style="list-style-type: none"> Built in wardrobes Double glazed windows Door bell with camera | ENERGETIC CERTIFIED  <p>The image shows a vertical energy efficiency scale with seven horizontal bars labeled A through G. Bar A is dark green, B is green, C is light green, D is yellow, E is orange, F is dark orange, and G is red. To the right of these bars is a vertical green bar with the text 'IN PROGRESS' written vertically inside it.</p> | |

"OUR EXPERIENCE IS YOUR GUARANTEE"