



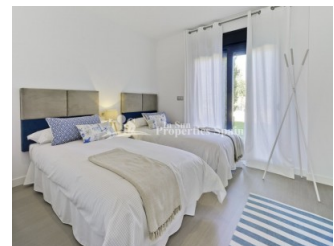
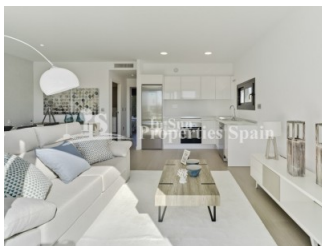
REF: # 4500

ORIHUELA COSTA (PILAR DE LA HORADADA)



#### INFO

PRICE:	179.900 €
PROPERTY TYPE:	Villa
CITY:	Orihuela Costa (Pilar de la Horadada)
BEDROOMS:	2
Bathrooms:	2
Build ( m2 ):	75
Plot ( m2 ):	142
Terrace ( m2 ):	65
Year:	2018
Floor:	2
Old price	-




#### DESCRIPTION

Villa ANA on the Outer Island at LO ROMERO, PILAR DE LA HORADADA is a 2 bedroom 75m2 model with 2 bathrooms, open plan lounge / dining area, private garden and 65m2 rooftop solarium. Distributed on one level within a 142m2 plot. Large master bedroom with en-suite bathroom, full side wall wardrobes with patio door leading onto the private garden – exterior steps take you to the generous rooftop solarium. These stunning detached villas are available on different sized plots on an elevated position at Lo Romero Golf Resort – some enjoying stunning views to the sea and golf course. Lo Romero Golf is a complex of more than 1.25 million square meters, which includes a golf course of 18 holes par 72, with clubhouse and driving range, sports and leisure area, hotel and shops. Its magnificent sea views, prime location, just 5 km from the beautiful beaches of Torre de la Horadada, and its design of wide streets surrounded by lush pine have made this golf resort one of

the most popular in the area, since its opening in January 2008.



<b>STYLE</b> <ul style="list-style-type: none"> <li>Modern</li> <li>Contemporary</li> </ul>	<b>VIEWS</b> <ul style="list-style-type: none"> <li>Panoramic views</li> </ul>	<b>DISTANCE TO :</b> <div>Beach : 5 Km</div> <div>Airport: 20 Km</div> <div>Town center : 2 Km</div>	<b>ORIENTATION</b> <div>South east</div>
<b>PARKING</b> <div>Parking no Cars: 1</div>	<b>FLOORING</b> <ul style="list-style-type: none"> <li>Tile floors</li> <li>Stone floors</li> </ul>	<b>KITCHEN</b> <ul style="list-style-type: none"> <li>Open kitchen</li> <li>Equipped kitchen</li> <li>Granite countertop</li> </ul>	<b>GARDEN AND TERRACES</b> <ul style="list-style-type: none"> <li>Covered terrace</li> <li>Open terrace</li> <li>Landscaped</li> <li>Private garden</li> </ul>
<b>EXTRA</b> <ul style="list-style-type: none"> <li>Built in wardrobes</li> <li>Reinforced door</li> <li>Double glazed windows</li> </ul>	<b>ENERGETIC CERTIFIED</b> <div>  </div>		

"OUR EXPERIENCE IS YOUR GUARANTEE"