



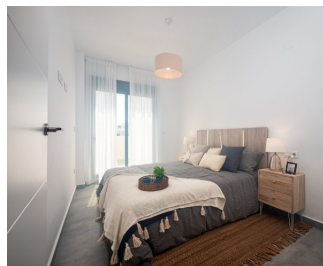
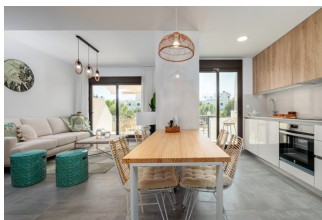
REF: # 10330

ORIHUELA COSTA (VILLAMARTIN PAU-8 )



#### INFO

PRICE:	329.000 €
PROPERTY TYPE:	Villa
CITY:	Orihuela Costa (Villamartin Pau-8 )
BEDROOMS:	3
Bathrooms:	2
Build ( m2 ):	83
Plot ( m2 ):	141
Terrace ( m2 ):	45
Year:	
Floor:	2
Old price	-

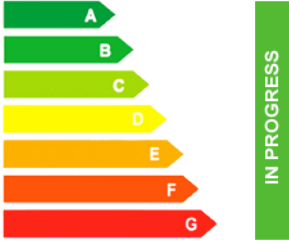


#### DESCRIPTION

FANTASTIC NEW BUILD VILLA IN PAU 8, ORIHUELA COSTA - with private pool and garden. **\*\*SPECIAL PROMOTION TO 30TH APRIL - INC AIRCON, KITCHEN APPLIANCES, POOL, PARKING\*\*** This new build 83m2 villa is built on a plot of 141m2 over two levels and consists of 3 bedrooms, 2 bathrooms, 40m2 terrace, private landscaped garden, swimming pool and private pool. The villa is fitted with air conditioning pre-installation, alarm system, exterior lighting in terraces and garden all included in the price! Located within walking distance to the famous "Villamartin Plaza" with its many restaurants, bars, supermarkets, banks, pharmacies you have all amenities right on your doorstep! Villamartin was built around one of the most prestigious golf courses on the Costa Blanca, Villamartin Golf Club, it is home to a Cosmopolitan and International community. Just a short distance away you can find three other golf courses such as Las Ramblas, Campoamor and La Finca.

However, it is not only a golfer's paradise, you can also find a large range of activities and entertainment for all the family; water parks in Torrevieja and Ciudad Quesada, open weekly markets, cinemas etc. You will also find some of the best blue flag beaches in the region like La Zenia, Cabo Roig and Campoamor only 5km away! The area is also known to have one of the healthiest climates in the world! So, whether you are looking for a holiday home, a Golf property or a permanent residence, this property offers everything you could need! The nearest Airports are Alicante and Murcia Corvera, both approximately 50 minutes away.



STYLE	VIEWS	AIRCONDITIONING	DISTANCE TO :
<ul style="list-style-type: none"> <li>Modern</li> <li>Contemporary</li> </ul>	<ul style="list-style-type: none"> <li>Panoramic views</li> </ul>	<ul style="list-style-type: none"> <li>Central airconditioning</li> </ul>	Beach : 3 Km <hr/> Airport: 50 Km <hr/> Town center : 2 Km
FURNITURE	PARKING	MAIN LIVING AREA	FLOORING
<ul style="list-style-type: none"> <li>Not furnished</li> </ul>	Parking no Cars: 1 <hr/>	<ul style="list-style-type: none"> <li>Storage</li> <li>Bathroom en-suite</li> </ul>	<ul style="list-style-type: none"> <li>Tile floors</li> <li>Stone floors</li> </ul>
KITCHEN	GARDEN AND TERRACES	EXTRA	ENERGETIC CERTIFIED
<ul style="list-style-type: none"> <li>Open kitchen</li> <li>Equipped kitchen</li> <li>Granite countertop</li> </ul>	<ul style="list-style-type: none"> <li>Open terrace</li> <li>Automatic watering system</li> <li>Fenced</li> <li>Stone walls</li> <li>Private garden</li> <li>Communal Garden</li> </ul>	<ul style="list-style-type: none"> <li>Built in wardrobes</li> <li>Reinforced door</li> <li>Double glazed windows</li> <li>Storage room</li> </ul>	 <p>The image shows a vertical energy efficiency scale with seven levels, A through G, represented by horizontal bars of increasing length and changing colors from dark green at the top to red at the bottom. A green vertical bar on the right side of the scale is labeled 'IN PROGRESS' and extends to the level of 'A'.</p>

**"OUR EXPERIENCE IS YOUR GUARANTEE"**